

# IRRIGATION ACT of 1922



PROUD OF OUR ASSOCIATION



# **IWS Forefathers**

**The 1800s**

## OUR IWS COMMUNITY – Its Forefathers 'The Colony Builders'



W. Pettigrew  
(Mayor of  
Brisbane ~ 1870)

**Brisbane + Saw + Mills.**

ESTABLISHED 1851.

**WILLIAM & MARGARET STREETS, BRISBANE.**

AS AT "MARGARET RIVER"

Timber Sawn by Frame and Circular Saws up to  
70 feet and not exceeding 8 tons.

**1853 – (Colony of NSW)** Pettigrew's Saw Mills,  
cnr William & Margaret Sts (Qld's 1<sup>st</sup> steam pwd Mills)

**1953 – (Colony of QLD)** Commissioner Nimmo's Offices,  
cnr William & Margaret Sts (directly opposite Mills)

that locality. Sir Thomas Mellwraith, Colonial Treasurer, in making his last financial statement to Parliament, spoke as follows:—"When we consider that this 88,300 square miles (the proved water-bearing area) comprises some of the best land in Australia, and that artesian water in the enormous quantities found puts cultivation by irrigation in the Far West among the probabilities, I think we have good cause for looking forward with much better hope to closer settlement in the near future within our big western territory." Marked success has attended the Queensland Water Supply Department's efforts to procure a large outflow of artesian water.

**1894 – Colonial Treasurer's Optimism**  
re 'cultivation-by-irrigation in the Far West'

Pumping Machinery.

**INTERCOLONIAL  
DEEP WELL BORING  
& MANUFACTURING CO., LTD.**

corner of  
Ann and  
Raff streets

**1899 – Intercolonial Boring Co**  
cnr Ann & Raff Streets, Brisbane

**AUSTRALIAN WATER  
AUGER.**

WATER SEARCHED FOR AND RAISED  
FROM ANY DEPTH.

**1884 – H Box & Son., Brisbane**

**COMET**

**STRONG  
SIMPLE  
RELIABLE**

TWELVE SIZES - FROM  
8" TO 36" DIA OF WHEEL.  
PUMPING POWER ALL DEPTHS.  
SHELLS WELLS TO 1000'.

SALES OFFICE: ROCKHAMPTON, BRISBANE,  
TOWNSVILLE & RUCHEMUNDEN.

**SIDNEY WILLIAMS & CO**

**1917 – Sidney Williams & Co**  
Comet Windmills, South Brisbane

### Colonial Treasurer's Department.

**TREASURY.**  
Office—Queen Street.

#### HARBORS AND RIVERS DEPARTMENT.

Office—Treasury Buildings.

**Engineer-in-Chief—William D. Nisbet, M. Inst. C.E. Assistant Engineer—Alfred J. Goldsmith, A. Inst. C.E.**

**Resident Engineer, Northern Works—G. Gemmell Dick, A. Inst. C.E. Surveyor—Joseph B. Stanley, A. Inst. C.E. Clerk and Bookkeeper—Warren Woodson. Draughtsmen—Thos. Hutchinson, B. Wagen Knecht, and Joseph H. Barnes. Master of Dredge Greer—William T. Summers. Master**

**of Dredge Liffon—Charles Laing. Master of Dredge Bremer—Inspectors—J. A. Paterson, B. Pickles, and Henry George. Foreman—Jno. Whiteaker and J. Gibbons. Waterworks Branch—Engineer in Charge—J. B. Henderson.**

#### 1881 – Harbours and Rivers Dept

Waterworks Branch (EIC John Baillie Henderson) – Queen St

#### HYDRAULIC ENGINEERS DEPARTMENT.

**Hydraulic Engineer: J. B. Henderson, M. Inst. C.E., and Mem. Inst. Mech. Eng. Accountant: F. C. Lea. Correspondence Clerk: E. Irving Dickson. Clerk: W. Hamilton. Junior Clerk: W. M. Bryce. Draftsman: F. Weber. Overseer in charge of American Boring Machinery: J. D. Arnold. Overseers of Districts: W. M. Mackinnon, J. Hargreaves, and J. M. Haig. Overseer of Boring: William Charles. Surveyor: F. G. Reuben. Overseer in charge Steam Scoops: J. Ball, and D. Baby. Clerk Western District: James Orr.**

Departmental staff recruited by 1886

#### 1883 – Hydraulic Engineers Dept (later WS Dept)

Engineer JB Henderson appointed as Qld's first Hydraulic Engineer 'to supply public roads and stock routes and to attend to the needs of the graziers on the western plains'.

**THE HEADQUARTERS HOUSE**

FOR  
REPAIRS OF  
STEAM ENGINES  
AND  
MACHINERY  
AND  
FOR  
THE  
REPAIRS OF  
ALL  
MACHINERY  
AND  
FOR  
THE  
REPAIRS OF  
ALL  
MACHINERY

**120430 EDWARD STREET.**

**ESCA FOR EVERYTHING ELECTRICAL.**

**CALL AND INSPECT OUR SHOWROOMS**

**WATER LIFTED 500 FEET  
AND PUMPED A MILE**

at a Cost of 1d. per hour

**OUR FARM PUMP  
ENGINE** will do this  
as well as cut chaff, saw  
wood, work shoring ma-  
chines, &c. It can be at-  
tached to a windmill or al-  
most any other pump in 3  
minutes. Needs no me-  
chanic to fix or operate,  
and works all day with at-  
tention. Hundreds sold  
and giving satisfaction.

**Price £35,  
with 'Boch' Magsco.**

If interested in water  
supply or irrigation, state your working  
conditions and we will quote. We stock Steam,  
Kerosene, Petrol and Hot Air Engines, Centrifugal  
Pumps, and "Myers," "Gould's," and "Dre-  
sing" Pumps for all services. "Markie's" Rock  
and Water Borer and plans for deep well and bore  
pumping a specialty. Immense stocks "Chal-  
lenge" Windmills. We erect if required and give  
easy terms. Catalogs and expert advice free.

**1922 – Engineering  
Supply Company of Aust**  
Edward St., Brisbane  
(Irrigation Pump Suppliers)



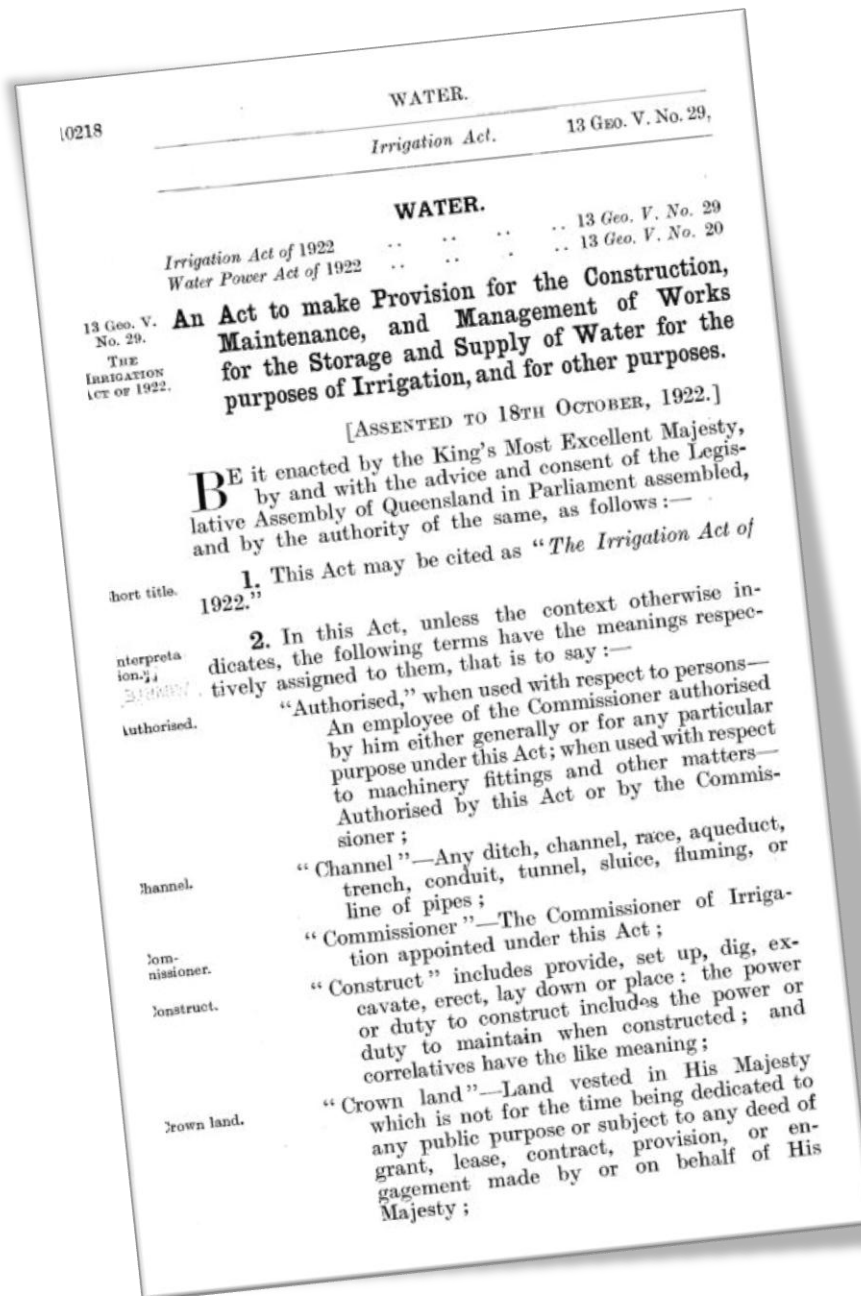
PROUD OF OUR ASSOCIATION

Placemat 4 of 6

# **IWS – Its start in 1922**

- IRRIGATION ACT OF 1922
- QUEENSLAND IRRIGATION COMMISSION
  - DAWSON VALLEY AND THEODORE





## The Irrigation Act of 1922

Assented to 100 years ago  
(Yesterday)



Archibald Partridge

Appointed as Queensland's  
First Irrigation Commissioner  
(100 years ago **TODAY**)

## OUR IWS COMMUNITY – Its Birth on 18 October 1922

An Act to make Provision for the Construction, Maintenance, and Management of Works for the Storage and Supply of Water for the purposes of Irrigation, and for other purposes.

[ASSENTED TO 18TH OCTOBER, 1922.]

BE it enacted by the King's Most Excellent Majesty, by and with the advice and consent of the Legislative Assembly of Queensland in Parliament assembled, and by the authority of the same, as follows:—

1. This Act may be cited as "*The Irrigation Act of 1922*."

2. In this Act, unless the context otherwise indicates, the following terms have the meanings respectively assigned to them, that is to say:—

"Authorised," when used with respect to persons—

An employee of the Commissioner authorised by him either generally or for any particular purpose under this Act; when used with respect to machinery fittings and other matters—  
Authorised by this Act or by the Commissioner;

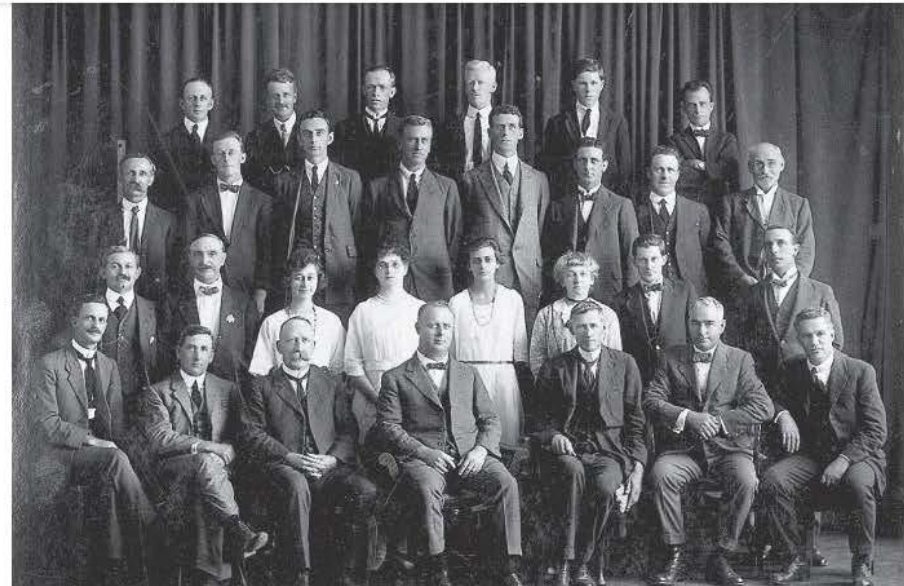
"Channel"—Any ditch, channel, race, aqueduct, trench, conduit, tunnel, sluice, fluming, or line of pipes;

"Commissioner"—The Commissioner of Irrigation appointed under this Act;



QUEENSLAND  
IRRIGATION COMMISSION.  
**DAWSON RIVER IRRIGATION SCHEME  
CASTLE CREEK SECTION  
TOWNSHIP**

— A. J. Partridge, Commissioner



**QUEENSLAND IRRIGATION COMMISSION HEADQUARTERS STAFF**

**DECEMBER 1922**

(Back row) ET Abell (Records Clerk), AE Oram (Senior Clerk), WA Conroy (Computer), RI Wragge (Stream Gauger), MH Shenton (Accounts Branch) EV Stevens (Accountant)

(Third row) WC Ross (Storekeeper), J Ogden (Streamgaugers Asst), AF Sharp (Hydraulic Surveyor), ER Taylor (Draftsman), AF McHenry (Commissioner's Sec) WC Fairley (Asst Mech Eng), PJ Kenny (Transport), G Irons (Inspector)

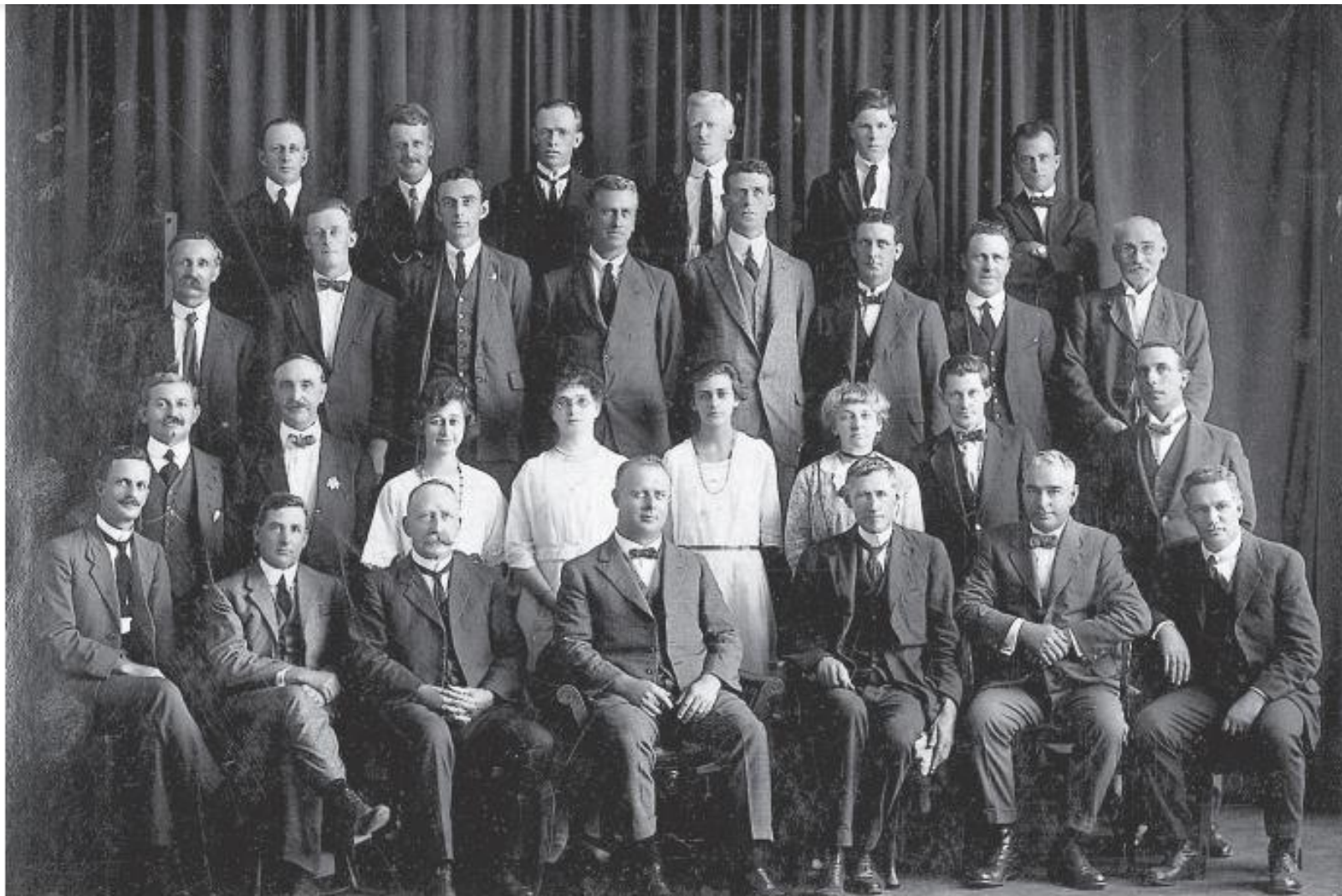
(Second row) A Lamb (Insp. Works), WW Bond (Chief Draftsman), NM Austin (Typiste), J Burnett (Asst Records Clerk), AEI Penballurick (Typiste), EA Earle (Mail Clerk), WF Kearton (Draftsman), WH Patterson (Draftsman)

(Front row) EJ Calvert (Eng. Stream Gauging), PC Tibbits (Eng. Art. Bores), CE Desbon (Eng. Water Supply), AF Partridge (Commissioner), BE Shaw (Supv. Irrig. Eng), GT Chapman (Chief Clerk), C Douglas (Mech. Eng.)

IRRIGATION ACT of 1922



PROUD OF OUR ASSOCIATION

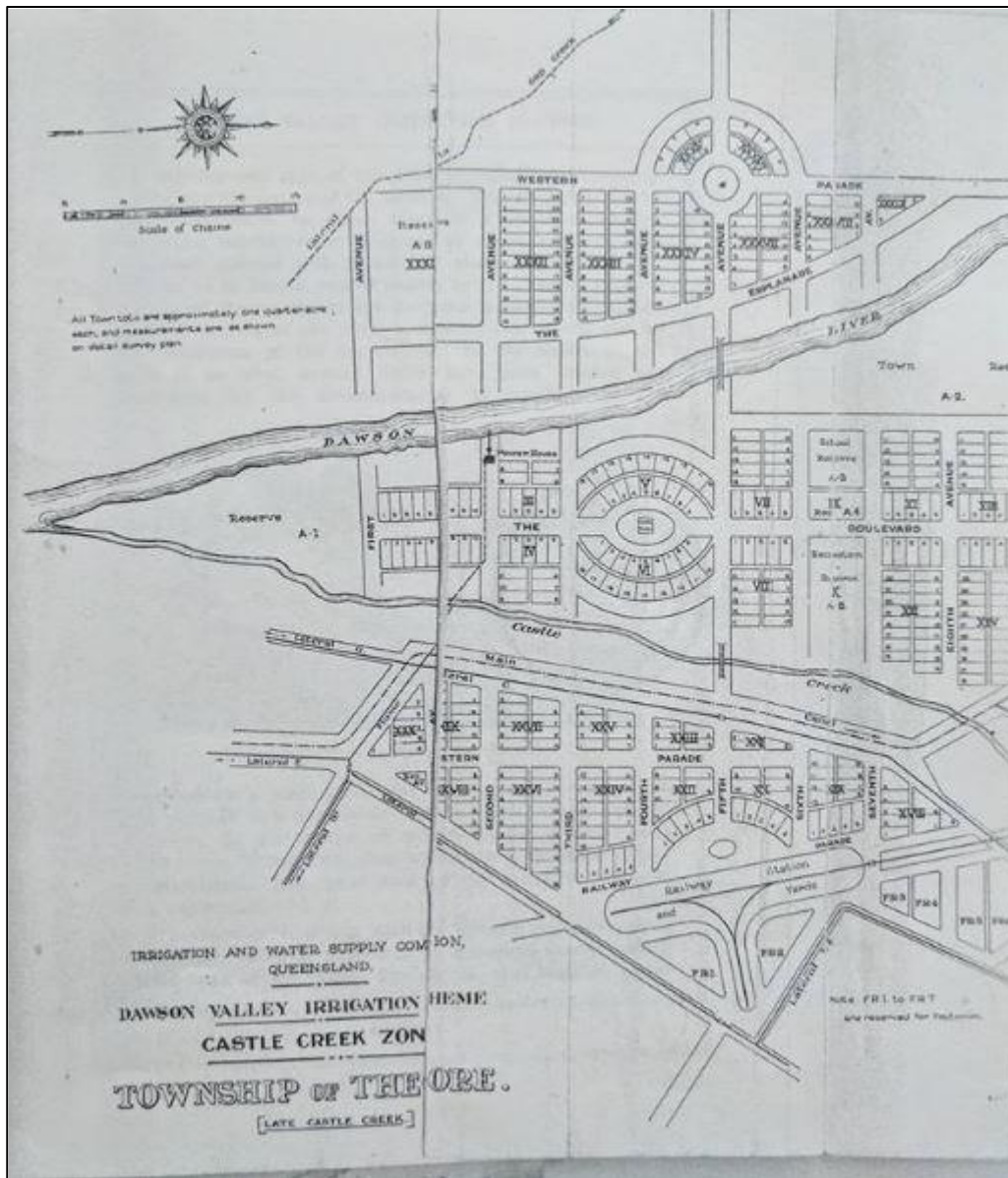


**Irrigation Commission – Head Office Staff (December 1922)**



Theodore

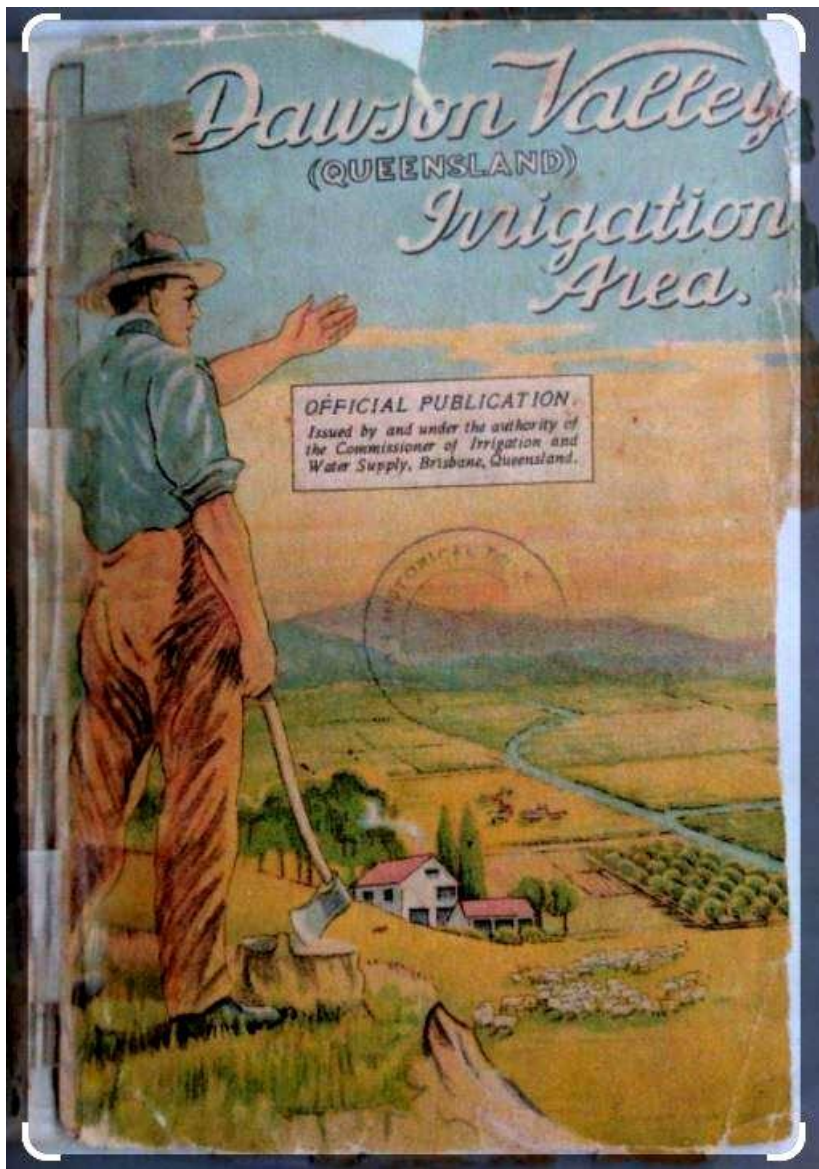
‘THE TOWN THAT WATER BUILT’





**Theodore Weir** - under construction (1929)





When the  
to the rails  
safe of the  
he waiting  
cocked in-  
ments must  
known to

tion had a  
dged con-  
and made  
g. to pay  
farmers to  
s. He was  
t. Yet the  
the wheat  
ed no more  
three con-  
is to be  
d railway  
prices of  
out, since  
no nearer,

aldrant is  
Conserve-  
sought of  
these work-  
er as the  
s held in  
tropolitan  
Theatre-  
d, about  
gotten for  
way, it is  
led friend-  
there is  
the bosom

in Million  
htly with  
Hawianian  
ch Islands  
; the mas-  
is—and he  
m in how-  
ering the  
page there  
w. 49,000  
da. 24,861  
Koromo-  
some sam-  
is becom-

ren back  
me not-  
h of Aus-  
ren. Alce-  
e. McRae  
stant-rail  
partment  
out; and  
moves in  
It wasn't  
is to-day.  
town that  
be-adapt-  
the head-  
y, W. G.  
n he was

-trimming  
hopes—is  
on. Cou-  
where it  
Australia  
new sub-  
s of Port  
mington,  
with 12-

# Dawson Valley Irrigation Area Queensland

(7,000 FARMS FOR 7,000 FARMERS)

...

*Opened for Selection—November 1, 1926*

**T**HE first sections, compris-  
ing 373 Irrigated and  
attached Dry Farms, are  
now ready for occupation.  
These include fine irrigated  
alluvial areas, and, in com-  
bination with the high-level  
farms, offer facilities for mixed  
farming under advantageous  
..... conditions .....

*Applications Close January 31, 1927*

...

For General Information Apply

## Irrigation and Water Supply Commission

(Land Settlement Branch)

BRISBANE ... QUEENSLAND

**Dawson Valley Irrigation Area - The First Scheme that 'Water' built**  
Development, Promotion & 'Open for Selection' of the first 373 Farms by the IWSC (1926)



## Dawson Valley Irrigation Area

### Queensland

(7,000 FARMS FOR 7,000 FARMERS)

Opened for Selection—November 1, 1926

THE first sections, comprising 373 irrigated and attached Dry Farms, are now ready for occupation. These include fine irrigated alluvial areas, and, in combination with the high-level farms, offer facilities for mixed farming under advantageous conditions.

Applications Close January 31, 1927

For General Information Apply  
**Irrigation and Water Supply Commission**  
(Land Settlement Branch)  
BRISBANE . . . QUEENSLAND

## REVOLUTION in SHAVE

NO SOAP! NO BRUSH!

Why the Shave Wax has come to stay

**ShaveX**

FRIDAY, NOVEMBER 7, 1924.

## "UNION FLOUTED."

Strike at Castle Creek Irrigation Area.

"DIRECT ACTIONISTS" BLAMED.

The Minister for Lands (Mr. McCormack) would not comment on the strike of A.W.U. workers at Castle Creek irrigation area. The Commissioner for Irrigation (Mr. Partridge) stated today, however, that the strike was not regarded as serious, and it was expected that it would last only a few days. Direct actionists were taking matters in their own hands, disregarding the secretary's advice, and compelling the mill hands to strike. The A.W.U.'s orders to resume work had been ignored.

(1916-1926) / Sat 10 Jul 1926 / Page 5 / DAWSON VALLEY

926.

## DAWSON VALLEY

### THE FIRST ZONE

OPEN IN SEPTEMBER

DENOMINATED THEODORE

In September the first zone of the Dawson Valley irrigation scheme will be thrown open for settlement. It is called the Theodore zone, after the former Premier, and comprises 371 farms, of which 283 are irrigated and 88 are dry farms. This zone is in the centre of the area, and was formerly known as Castle Creek. The central town of the zone has been called Theodore, and it

Rockhampton, Qld.: 1878-1954 / Sat 22 Jul 1950 / Page 1 / IRRIGATION MAY BRING

## IRRIGATION MAY BRING 10,000 TO DAWSON VALLEY

BRISBANE, July 21.—The Dawson Valley's population of 1000 is expected to increase at least 10 times when the State Government's £8,000,000 irrigation project for the district is completed.

It is known that the project could provide for intensive irrigation of about 60,000 acres annually.

The annual value of production from the irrigation project is expected to be at least £1,400,000.

It is considered possible to establish some 600 farms in the Dawson Valley.

Combined State and Federal revenue from the valley is estimated at £600,000 annually. A preliminary estimated cost of the project is £8,000,000.

These figures and estimates are contained in a report to the Lands and Irrigation Commission.

The Dawson Valley is described as a rich fertile area lying to the south of Rockhampton. It extends from Duramba in the north to Tannum in the south, and is bounded on the east by the Runnes and Auburn ranges, and on the west by the Expedition Range and on the south by the Great Dividing Range.

The main centre is Theodore, 141 miles from Rockhampton.

The Dawson Valley is described as a rich fertile area lying to the south of Rockhampton. It extends from Duramba in the north to Tannum in the south, and is bounded on the east by the Runnes and Auburn ranges, and on the west by the Expedition Range and on the south by the Great Dividing Range.

The main centre is Theodore, 141 miles from Rockhampton.

The Dawson Valley is described as a rich fertile area lying to the south of Rockhampton. It extends from Duramba in the north to Tannum in the south, and is bounded on the east by the Runnes and Auburn ranges, and on the west by the Expedition Range and on the south by the Great Dividing Range.

The main centre is Theodore, 141 miles from Rockhampton.

The Dawson Valley is described as a rich fertile area lying to the south of Rockhampton. It extends from Duramba in the north to Tannum in the south, and is bounded on the east by the Runnes and Auburn ranges, and on the west by the Expedition Range and on the south by the Great Dividing Range.

The main centre is Theodore, 141 miles from Rockhampton.

The Dawson Valley is described as a rich fertile area lying to the south of Rockhampton. It extends from Duramba in the north to Tannum in the south, and is bounded on the east by the Runnes and Auburn ranges, and on the west by the Expedition Range and on the south by the Great Dividing Range.

The main centre is Theodore, 141 miles from Rockhampton.

The Dawson Valley is described as a rich fertile area lying to the south of Rockhampton. It extends from Duramba in the north to Tannum in the south, and is bounded on the east by the Runnes and Auburn ranges, and on the west by the Expedition Range and on the south by the Great Dividing Range.

The main centre is Theodore, 141 miles from Rockhampton.

The Dawson Valley is described as a rich fertile area lying to the south of Rockhampton. It extends from Duramba in the north to Tannum in the south, and is bounded on the east by the Runnes and Auburn ranges, and on the west by the Expedition Range and on the south by the Great Dividing Range.

The main centre is Theodore, 141 miles from Rockhampton.

(Brisbane, Qld.: 1933-1954) / Fri 2 Apr 1954 / Page 5 / HO

## HOTEL PROFIT TO GO TO CULTURE

FUTURE profits from the Hotel Theodore will be used only for cultural and recreational purposes, or for improving the hotel or a local co-operative association's property.

This is provided for in a Bill introduced by the Lands Minister (Mr. Foley) in Parliament yesterday.

The Bill, which was read a first time, transfers ownership from the Government to the Hotel Theodore Co-operative Association Ltd.

It provides that the hotel can be sold only to another co-operative association under similar conditions.

Mr. Foley said that the hotel, built in 1923 and tentatively at £10,000. The association had leased it at an annual rent of £350 since 1930.

The Opposition Leader (Mr. Nicklin) said co-operative hotels were one answer to the problem of the sale and proper distribution of liquor in Queensland.

"No abuses"

"We don't find the same abuses in co-operative hotels as we find in some of the private licensed hotels in the State," he said.

The woman, Mrs. Josephine Dorothy Dutton, 40 domestic, was given a suspended sentence of three years' light labour when she pleaded guilty to having abducted Christopher Hills, four months from the outpatients' department of Newcastle Hospital last month.

Judge Amberg granted Mrs. Dutton a £100 good-behaviour bond, but said she had committed a wicked and evil crime.

Dr. I. Morgan said Mrs. Dutton was suffering from a neurosis which gave her an aggressive craving to

(Qld.: 1864-1933) / Mon 23 Jul 1928 / Page 22 / DAWSON VALLEY

23, 1928.

## DAWSON VALLEY.

### SEVERAL HUNDRED FARMS.

### IRRIGATED AND DRY AREAS.

A notification of the opening for selection of several hundred irrigated and dry farm blocks in the Theodore zone of the Dawson Valley irrigation scheme was issued by the Irrigation and Water Supply Commissioner (Mr. A. F. Partridge) on Saturday.

The notification sets out the charges to be levied and the conditions under which the areas may be selected, and announces the establishment of a registry office at the offices of the Commissioner, in College-road, Brisbane.

At this registry office the various transactions in connection with the land, the registration of the leases and mortgages, bills of sale, and liens, may be dealt with and recorded.

(Brisbane, Qld.: 1864-1933) / Sat 1 Jul 1927 / Page 32

## DAWSON VALLEY IRRIGATION AREA.

The Commissioner for Irrigation and Water Supply (Mr. A. F. Partridge) has issued an attractive booklet entitled the "Dawson Valley (Queensland) Irrigation Area," which will be circulated to make known the agricultural possibilities of the area. The booklet is well printed, and contains numerous illustrations of the various works in the scheme, the township of Theodore, and the land available for settlement, as well as maps of the Theodore zone and township. Much useful information for intending settlers, and an outline of the project are given. It is pointed out that during the past three years the work of making ready the Theodore zone for farming purposes has been proceeding steadily, and that 30,000 acres have been contoured and subdivided. There are 234 irrigated farms now ready

(Qld.: 1864-1933) / Sat 1 May 1927 / Page 11 / SETTLING THE

## SETTLING THE AREAS.

### 1700 INQUIRIES.

No fewer than 1720 inquiries have been received by the Irrigation Commissioner (Mr. A. F. Partridge) from persons who wish to settle in the Castle Creek section of the Dawson Valley irrigation system, and a large percentage of these have now become formal applicants for areas, while many have been accepted, and the prospective settlers are making preparations to occupy the lands allotted to them.

This information was vouchsafed by the Irrigation Commissioner (Mr. A. F. Partridge) yesterday, when commenting upon the telegram from Wooma published in the "Courier" that day stating that there were only five settlers on the ground at Castle Creek.

Mr. Partridge agreed that it was quite possible that only five persons had actually commenced dealing with their farms, but the fact also was that a great number of others had paid their deposits, and were in process of settlement.

Of the 1720 inquiries, 1700 were sent interest in pre-occupancy. Necessary arrangements for the period in which early arrangements sent homes and

Of the 1720 inquiries, 1700 were sent interest in pre-occupancy. Necessary arrangements for the period in which early arrangements sent homes and

Of the 1720 inquiries, 1700 were sent interest in pre-occupancy. Necessary arrangements for the period in which early arrangements sent homes and

Of the 1720 inquiries, 1700 were sent interest in pre-occupancy. Necessary arrangements for the period in which early arrangements sent homes and

Of the 1720 inquiries, 1700 were sent interest in pre-occupancy. Necessary arrangements for the period in which early arrangements sent homes and

Of the 1720 inquiries, 1700 were sent interest in pre-occupancy. Necessary arrangements for the period in which early arrangements sent homes and

Of the 1720 inquiries, 1700 were sent interest in pre-occupancy. Necessary arrangements for the period in which early arrangements sent homes and

Of the 1720 inquiries, 1700 were sent interest in pre-occupancy. Necessary arrangements for the period in which early arrangements sent homes and

Of the 1720 inquiries, 1700 were sent interest in pre-occupancy. Necessary arrangements for the period in which early arrangements sent homes and

Of the 1720 inquiries, 1700 were sent interest in pre-occupancy. Necessary arrangements for the period in which early arrangements sent homes and

Of the 1720 inquiries, 1700 were sent interest in pre-occupancy. Necessary arrangements for the period in which early arrangements sent homes and

## Dawson Valley Irrigation Area - In the News



## Hotel Theodore

Built & owned by IWSC  
IWSC's First Watering Hole

Sold by the IWSC in 1954  
to  
The Hotel Theodore Co-Operative

372

LIQUOR.

*Hotel Theodore Sale Act. 3 ELIZ. II No. 5.*

### LIQUOR.

3 ELIZ. II  
No. 5.  
THE HOTEL  
THEODORE  
SALE ACT  
OF 1954.

**An Act Relating to the Sale of the Hotel situated at Theodore in the Dawson Valley Irrigation Area and known as the Hotel Theodore.**

[ASSENTED TO 27TH APRIL, 1954.]

**B**E it enacted by the Queen's Most Excellent Majesty, by and with the advice and consent of the Legislative Assembly of Queensland in Parliament assembled, and by the authority of the same, as follows:—

Short  
title.

1. This Act may be cited as "*The Hotel Theodore Sale Act of 1954.*"

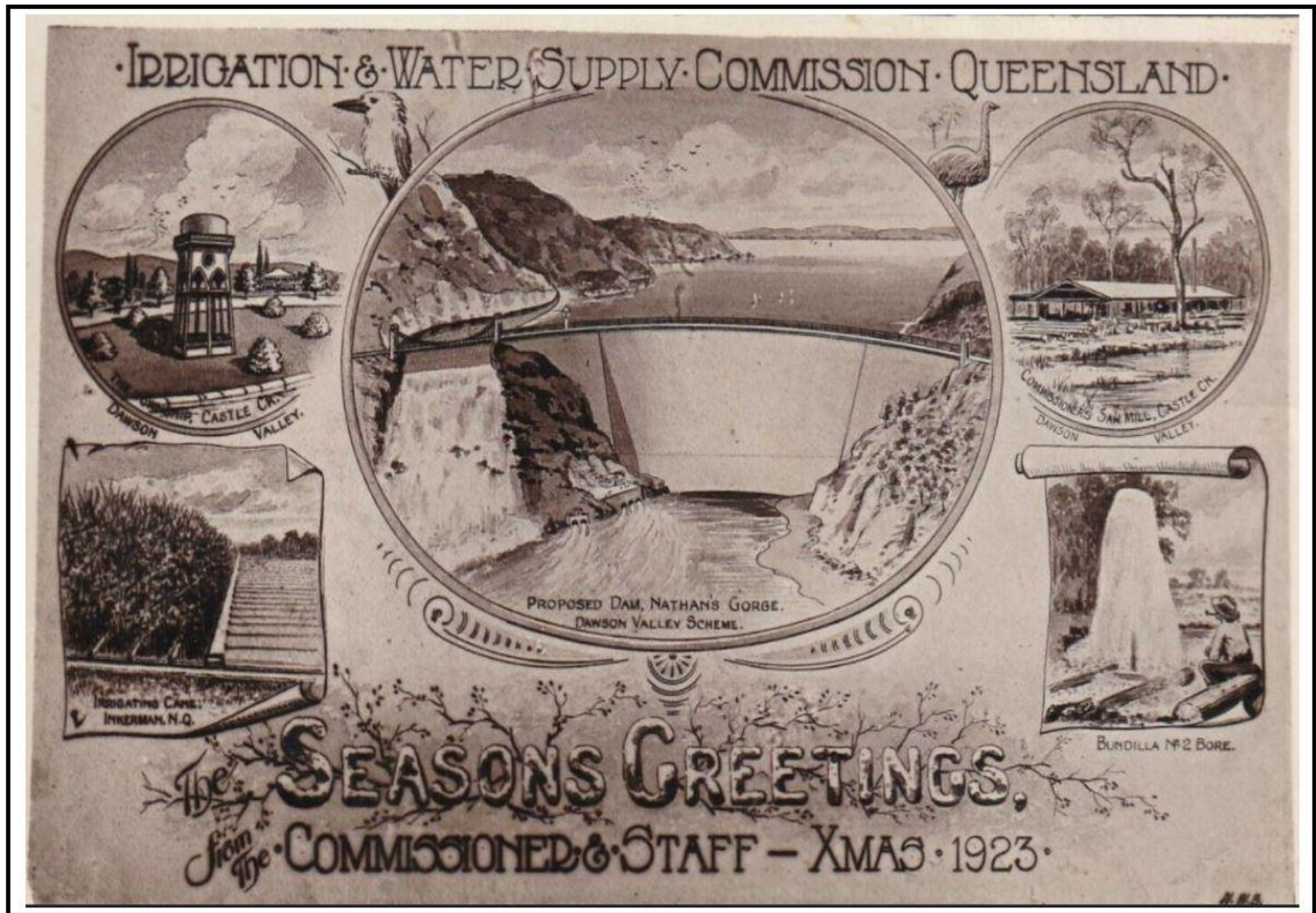
Repeal of  
s. 7. of  
25 Geo. V.  
No. 7.

2. Section seven of "*The Hotel Theodore Lease Enabling Act of 1934*" is repealed.

Sale of the  
Hotel  
Theodore  
authorised.

3. Subject to this Act, The Commissioner of Irrigation and Water Supply under and within the meaning of † "*The Irrigation and Water Supply Commission Acts, 1946 to 1949,*" may sell to the Hotel Theodore Co-operative Association Limited, a society formed and registered under ‡ "*The Co-operative Societies Acts, 1946 to 1951,*" the licensed premises under and within the meaning of § "*The Liquor Acts, 1912 to 1952,*" known as the Hotel Theodore and comprising the land described



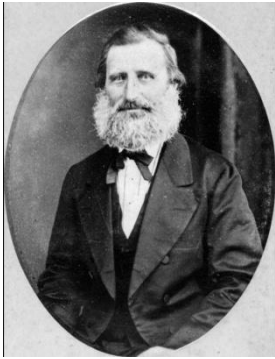


Commissioner Partridge's 'Seasons Greetings'  
to his Irrigation Settlers  
(Castle Creek 1923)



# **IWS – Its Staff and Workplaces**

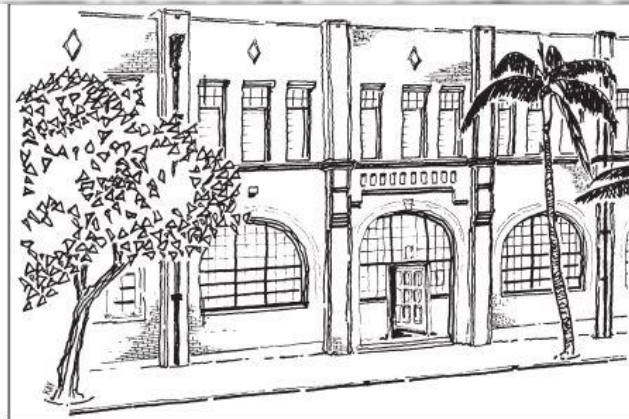




Brisbane Mayor  
~ 1870



Qld's 1<sup>st</sup> Steam-powered Sawmill



Old Courier Mail Building



IWS Commissioner

**1853**

William Pettigrew  
Manager, Brisbane Saw Mills  
cnr William and Margaret Streets  
Brisbane

**Colony of NSW**



and directly opposite



**1953**

William Nimmo  
IWS Commissioner  
cnr William and Margaret Streets  
Brisbane  
**State of QLD**

**THE IWSC H/O CORNER ADDRESS in 1953** — another part of Our IWS Community history

IRRIGATION AND WATER SUPPLY COMMISSION - BRISBANE TELEPHONE EXTENSION DIRECTORY  
GENERAL NUMBER 240717 - DIRECT DIALING TO ANY EXTENSION 24 PLUS EXTENSION

JUNE 1974

COMMISSIONER	ASST. COMM'R (ENG)	ASST. COMM'R (ADM)	CH/E SPECIAL DUTIES	CH. INV'N ENG'R	SECRETARY
F.B. HAIGH 7313	F.M. LEARMONTH 7316	H. McL. BEAL 7312	D. BEATTIE 7340	B.L. CREDLIN 7311	C.G. TAGGART 7310
COMMISSIONER'S CLERK	DESIGNS	MECHANICAL	PROPERTY BRANCH	STORES & SUPPLY	TRAINING OFFICER
C. YOUNG 7315	A. WICKHAM 7336	R. HITCHCOCK 7326	A. OTT 7342	G. JOHNSON 7350	J. PASHEN 7348
ACCOUNTS	N. ROSSI 7331	M. OCHERT 7325	R. LIDDELL 7343	S. Bailey 7351	TRUNK BOOKINGS 4000
W. BRANNELLY 7237	A. Bright 7332	R. Afflick 7324	S. Elms 7308	M. Callahan 7355	TYPING POOL
K. WATSON 7235	Draftsmen 7333	R. Barff 7320	R. Gomersall 7228	J. Crutcher 7356	M. Vivers (Miss) 7304
P. Bennett 7239	R. Dwyer 7332	C. Bode 7324	E. Robinson 7228	D. Krnjacki 7352	UNDERGROUND & S.W.
A. Bugeja 7230	Engineers Gen. 7335	L. Brace 7259	R. Walker 7314	D. Manson 7354	W. SHARP 7257
R. Marshall 7231	R. MacArthur 7332	G. Burton 7392	RECORDS	L. Steele 7357	O. VITTE 7254
V. Milinkovic 7231	P. McMahon 7338	Draftsmen 7320	P. KERSWELL 7367	P. Thompson 7353	W. Bellion 7250
J. Ratajczak 7232	K. Nutt 7330	A. Genito 7321	D. BARNETT 7367	T. Warland 7366	P. Cochrane 7244
D. Rowley 7232	L. Rogers 7330	J. Hastie 7323	File Locations 7368	SURFACE WATER	J. Connolly 7246
V. Rutledge 7236	R. Russo 7330	J. Henderson 7390	File Atch'ts 7369	H. STARK 7387	J. Curry 7242
A. Serek 7232	ENQUIRY COUNTER	D. Hughes 7320	RIVERS & STREAMS	J. WARD 7386	E. Davis 7258
T. Small 7230	S. ROSSI 7346	C. McLeod 7391	G. PEARCE 7370	N. Ashkanasy 7269	W. Day 7253
L. Stone 7231	GENERAL & CLERICAL	J. Myers 7320	R. FOX 7263	J. Baker 7216	Draftsmen 7251
J. Walls 7236	A. PAYNE 7302	I. Rankin 7392	I. Barr 7377	W. Baturo 7219	C. Hazel 7252
ADMIN. OFFICER	W. White 7303	P. Read 7320	B. Brogan 7377	Clerk 7385	D. Hooper 7248
C. LLEWELLYN 7314	INVESTIGATION OFFICER	J. Russell 7208	W. Burnham 7371	R. Denham 7216	C. Howard 7244
AUDITORS 7240	G. BERTRAM 7314	B. Truss 7208	I. Cameron 7265	A. Ezzy 7217	Hydrologists 7248
CONFERENCE ROOM	IRRIGATION & R.W.S.	PERSONNEL	Clerks Gen. 7374	Hydrographers 7219	W. Lane 7245
BOOKINGS 7302	S. ROSS 7220	H. HORNE 7327	F. Connolly 7377	Hydrologists 7269	M. McEniery 7248
CONSTRUCTION	L. REDMOND 7222	E. Porter 7328	R. Dore 7372	P. Logan 7216	A. McNeil 7243
A. TAYLOR 7204	Draftsmen 7225	PLANKEEPER	Draftsmen Gen. 7379	L. Paroz 7216	V. McNeil (Mrs) 7248
E. ROBINSON 7205	Engineers Gen. 7270	A. JARVIS 7309	R. Farrell 7261	A. Seabrook 7218	M. Murphy 7255
K. Bell 7349	R. Geddes 7223	PROJECT PLANNING	B. Fawcett 7373	B. Sebestyen 7268	K. Parry 7246
F. Charters 7202	G. Jordan 7271	J. MORSE 7283	Field Staff 7377	K. Smythe 7388	B. Pearce 7248
D. Connellan 7212	C. Julian 7227	T. FENWICK 7278	W. Hunter 7375	SYSTEMS	I. Pullar 7249
Draftsmen 7203	G. Keene 7221	P. Creevy 7285	W. Hutton 7378	W. BOUGHTON 7360	D. Schmiede 7248
J. Mclean 7212	R. McAllister 7270	Draftsmen 7280	E. Miller 7266	M. MARLEY 7362	Water Quality 7242
B. Newburn 7211	E. Melville 7224	W. Eastgate 7281	S. Morey 7373	Clerks 7361	
H. Napier 7207	E. Beitz 7224	Engineer's Gen 7282	D. Morwood 7262	Data Processing 7364	
D. Reid 7209	S. Robinson 7226	D. McCulloch 7280	A. Niland 7264	Programmers 7361/3	
I. Shield 7349	LIBRARY	B. McDonald 7276	I. Pryor 7260	TIE LINES	
N. Ullman 7206	J. WOODYATT (Mrs) 7337	G. Quinn 7284	J. Purcell 7265	I.W.S. ROCKLEA 6566 ) Dial code and	
C. VandenBerg 7201	LICENSES	T. Sleep 7277	M. Siebel 7377	FORESTRY DEPT. 5766 ) ask Operator for	
D. Wilmott 7201	G.M. DEIGHTON 7380	Surveyors 7277	J. Swales 7266	GOVERNMENT PRINTER 5366 ) Extension	
B. Wookovich 7203	General 7381	T. Thomas 7279	Typists 7374	ANZAC SQ. BLDGS. 21 ) Dial code, AWAIT DIAL	
		P. Thompson 7285	F. VanSchagen 7264	MAIN ROADS 22 ) TONE, then dial extensio	
			A. Vizer 7260	POLICE H'QRS. 23 ) No. OR for enquiries dis	
			R. Wilson 7378	Q.I.T. 24 ) 9. eg. Anzac Sq 21 9	

IWSC Head Office, cnr William & Margaret Streets, Brisbane  
1974 Contact List (pre – e-mail and mobile phones )



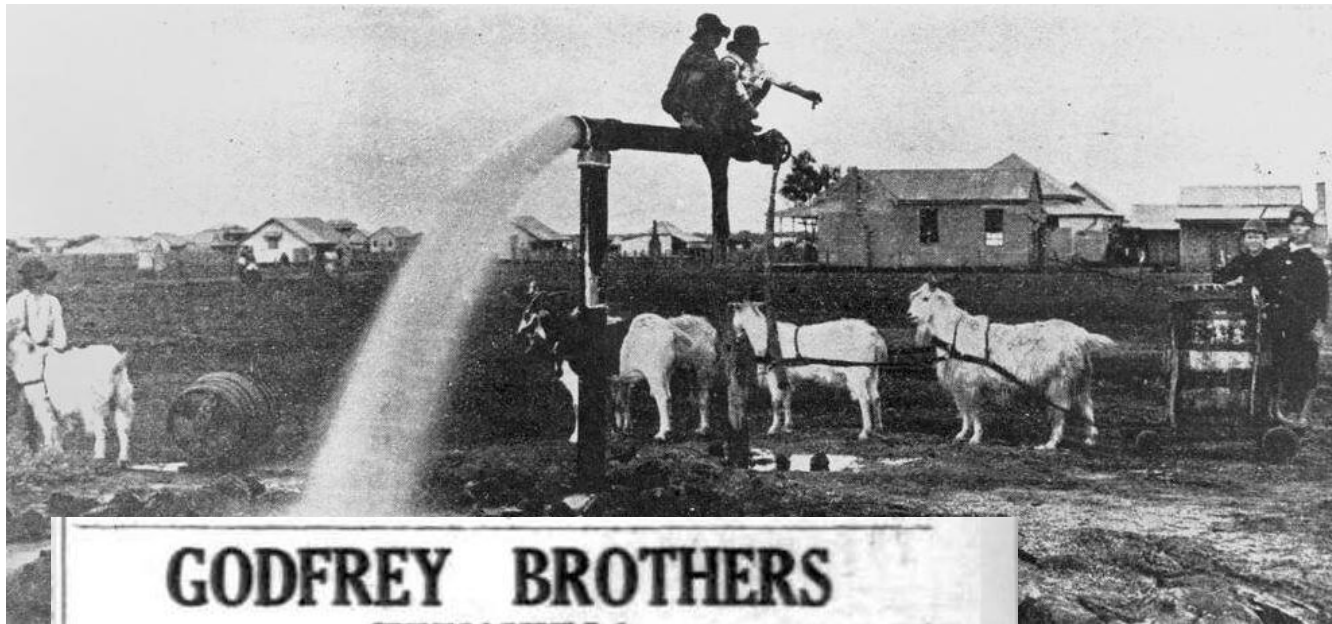
## **IWSC Word Processors – 1980**

Typing Pool (pre 'Microsoft Word' )





**IWSC Rocklea Depot – January 1974**



**Artesian Bore**  
(Muttaborra 1920s)

**GODFREY BROTHERS**  
**CUNNAMULLA.**  
**Artesian and Sub-artesian Boring Contractors.**  
Licensed drillers under the Department of Irrigation and Water Supply,  
Queensland, and The Water Conservation and Irrigation Commission,  
N.S.W. for Artesian Boring.  
Undertake to sink bores of from a depth of 10  
to 5000 feet with plants capable of completing  
work in the most speedy and efficient manner.

**Drillers**

Licensed by IWSC

**Bore Drains**  
Overseen by IWSC







**IWSC - Artesian Water and Stock Supplies Branch – staff photo (Brisbane - 1956)**

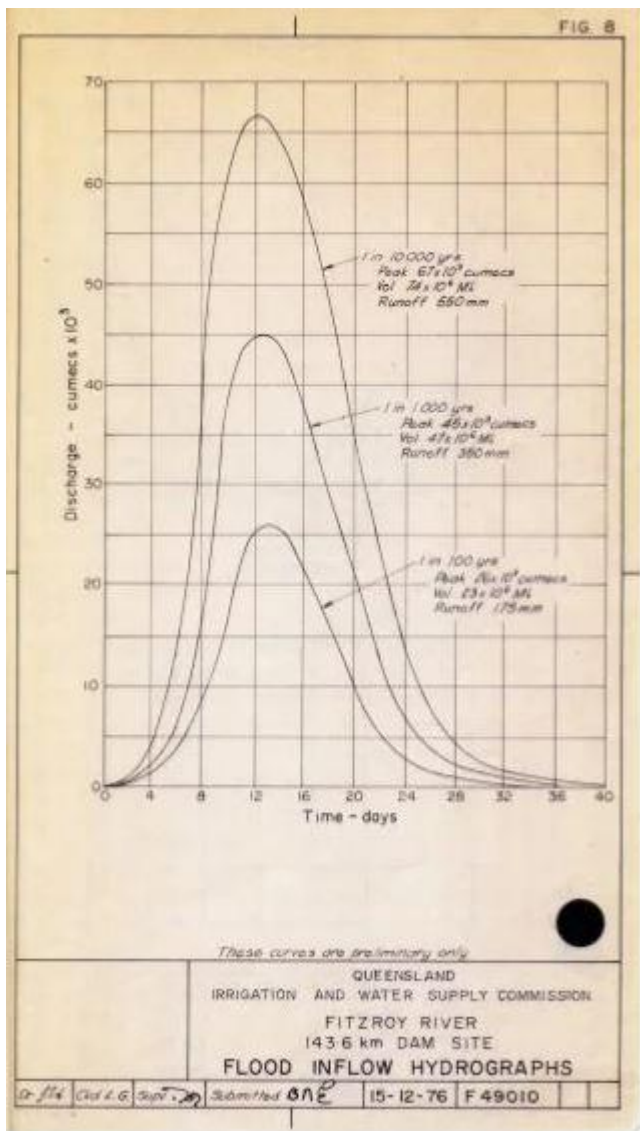


**IWSC – Groundwater Boring School (Charleville – 1971)**



**IWSC / QWRC – 660 years of Hydrographic Service - 1998**





## Stream Gauging by IWSC -1948 (pre-Gauging Stations)

## Hydrology by IWSC (pre-computers)

File 957/3

IRRIGATION AND WATER SUPPLY COMMISSION, QUEENSLAND. No 3 G.S. 50002/50  
(STREAM GAUGING BRANCH.) A.M.T.M. 87.75 3

REGISTER of GAUGINGS of Brisbane River at Lowood 11 16.1.  
from to Catchment Area sq. miles.

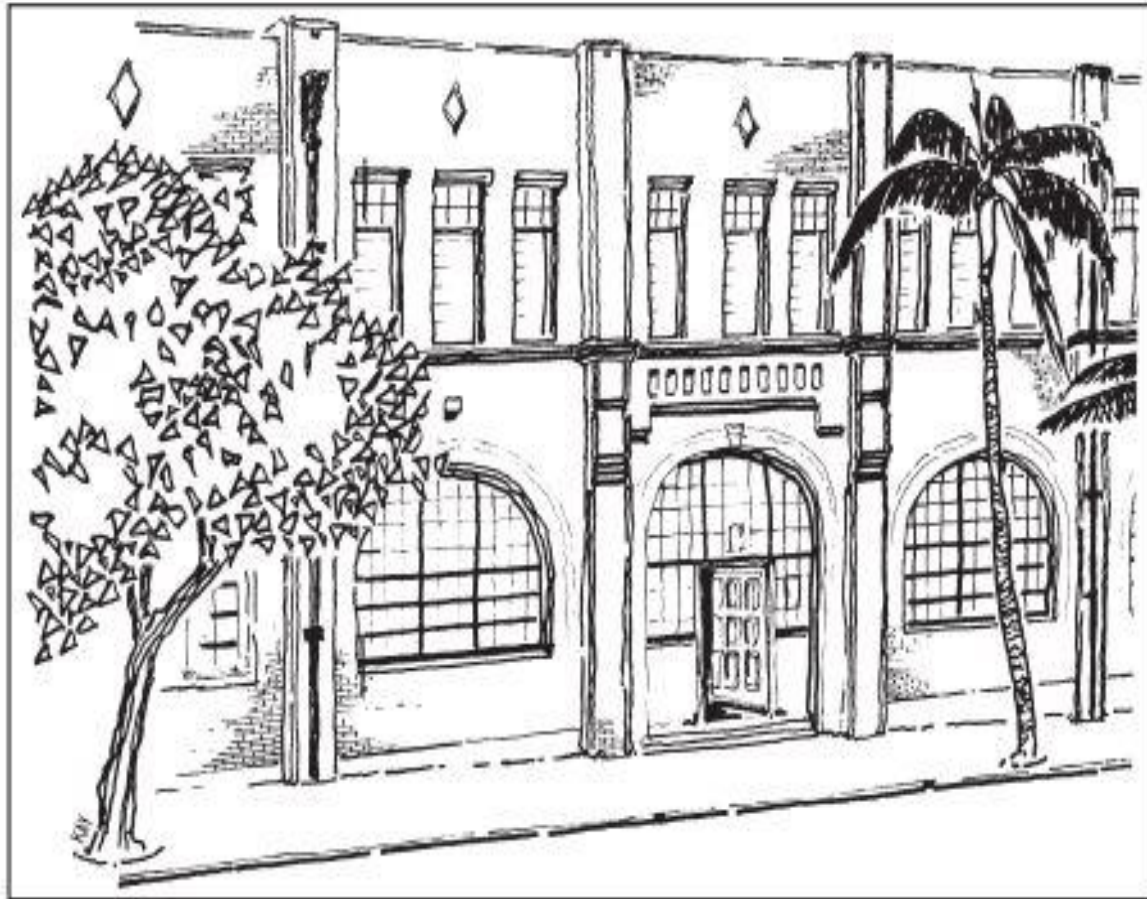
NAME OF OBSERVER	DATE OF OBSERVATION.	FIELD BOOK.		No. of MITER.	RATING TABLE.	GAUGE READING.			MEAN SURFACE VELOCITY IN: FT. PER SEC.	RATIO OF MEAN TO MEAN SOL. VELOCITY.	MEAN VELOCITY IN: FT. PER SEC.	AREA OF SECTION IN: Sq. FT.	DISCHARGE IN: CUBIC FT.	COMPUTED BY.	CHECKED DISCHARGE IN: CUBIC FT.	COMPUTATION CHECKED BY.	MEASURED AS FLOW METER.
		NO.	PAGE.			START.	FINISH.	MEAN.									
A. Morrison	1 23.3.09	A	2	3	V = 20.00 E 1011: 70/5 sec V = 20.17 - 0.01 = 20.16 2' 4" 2' 4" 2' 4"	2.5	680	17	231.69	38.99 ✓							
"	2 29.3.09	A	16	3	" " 2' 7" 2' 7" 2' 7"	4.4	779	34	81.20	27.86 ✓							
"	3 20.7.09	1	1	1	V = 38.90 + 19 = 57.90 V = 31.95 1' 4 1/2"	1.99	650	1.29	699.70	907.98 ✓							
"	4 5.10.09	1	10	3	V = 21.81 + 0.58 = 22.39 V = 21.09 + 0.23 = 21.32 1' 11" 1' 11" 1' 11"	6.67	694	4.63	121.69	55.43 ✓							
"	5 11.11.09	1	17	3	" " 1' 11" 1' 11" 1' 11"	6.08	740	4.50	122.24	55.12 ✓							
"	6 20.1.10	3	5	1	8.3.10 4' 11" 4' 6" 4' 8 1/2"	2.45	906	2.22	14.06	326.0 ✓					4.71		
"	7 21.1.10	3	9	1	" 5' 6 1/2" 5' 2" 5' 4 1/2"	2.698	910	2.456	1516.8	3726.0 ✓					5.35		
"	8 24.1.10	3	13	1	" 2' 6" 2' 4" 2' 5"	1.956	870	1.70	1032.6	1758.0 ✓					2.42		
"	9 25.1.10	3	16	1	" 1' 10" 1' 8 1/4" 1' 9 1/2"	1.83	836	1.53	928.0	1421.0 ✓					1.70		
"	10 12.3.10	3	22	3	9.3.10 1' 4" 1' 4" 1' 4"	1.27	874	1.107	178.0	197.0 ✓					6.71		
G.N. Croker	11 19.3.10	4	1	1	8.3.10 6' 11" 6' 6" 6' 8 1/2"	2.96	932	2.76	1789.0	4930.0 ✓					8.06		
"	2 23.3.10	4	9	1	" 9' 6" 8' 5" 8' 11 1/2"	3.46	951	3.29	2279.0	7997.0 ✓					9.02		
A. Morrison	3 16.1.11	6	6	5	24.1.11 10' 3" 9' 7" 9' 11"	1.534	92	1.412	6378.6	9008.0 ✓					13.25		
					9.3.10 13' 5" 13' 0 1/2" 13' 3"	2.00	90	1.949	7504.81	14631.0 ✓					11.12		
									6723.86	1058.0 ✓					6.62		

Record Keeping by IWSC  
(pre-spreadsheets)





# **IWS – Its Sense of Humour**



AQUARIUS – IWSC satirical staff magazine (1970s)

‘WATERY SAUCING’ by IWSC - more ‘Saucing’ than ‘Watering’



**Treasury's got him looking for a revenue stream !**

**Watery Saucing by IWSC - 'Saucing' the Right Source**





**No, it's not a camera !**

**Watery Saucing by IWSC - 'Saucing' the Right Site**



Is it a silty-clay or a clayey-silt ?

**Watery Saucing by IWSC** - 'Saucing' the Right Materials

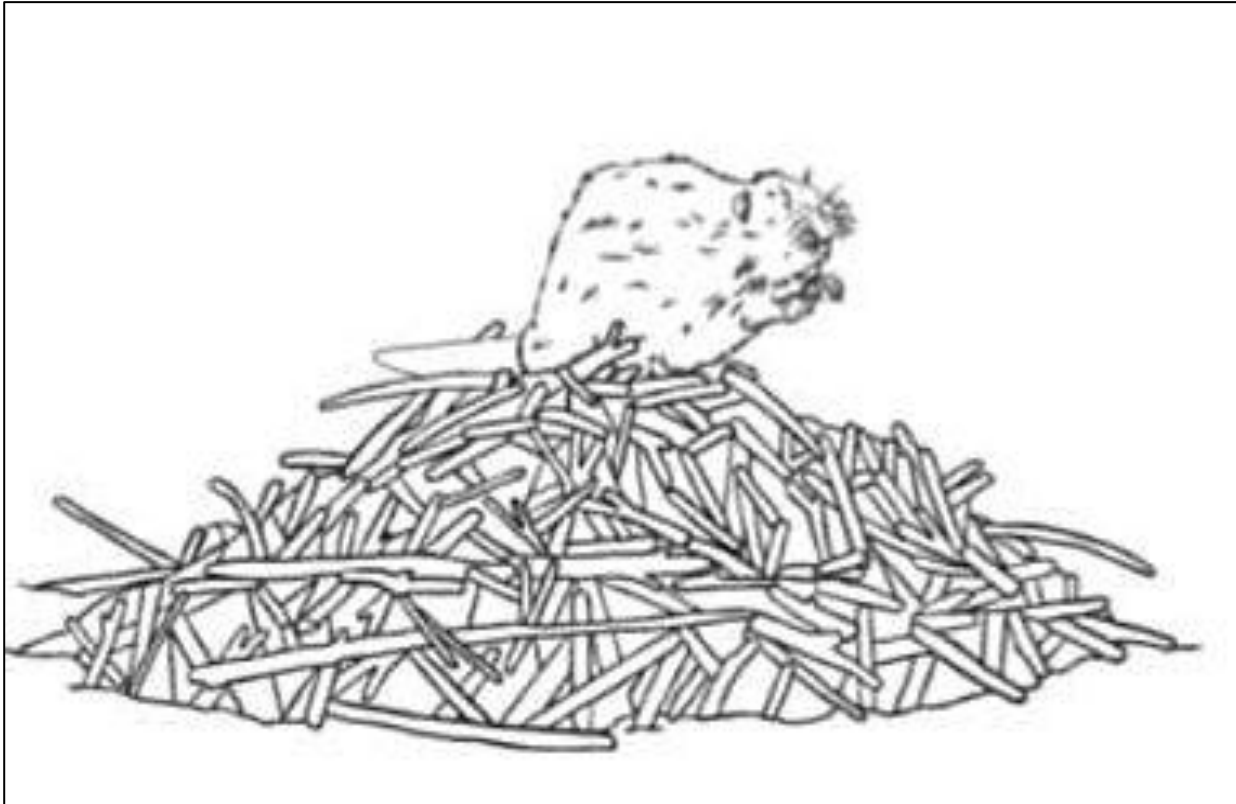


VS



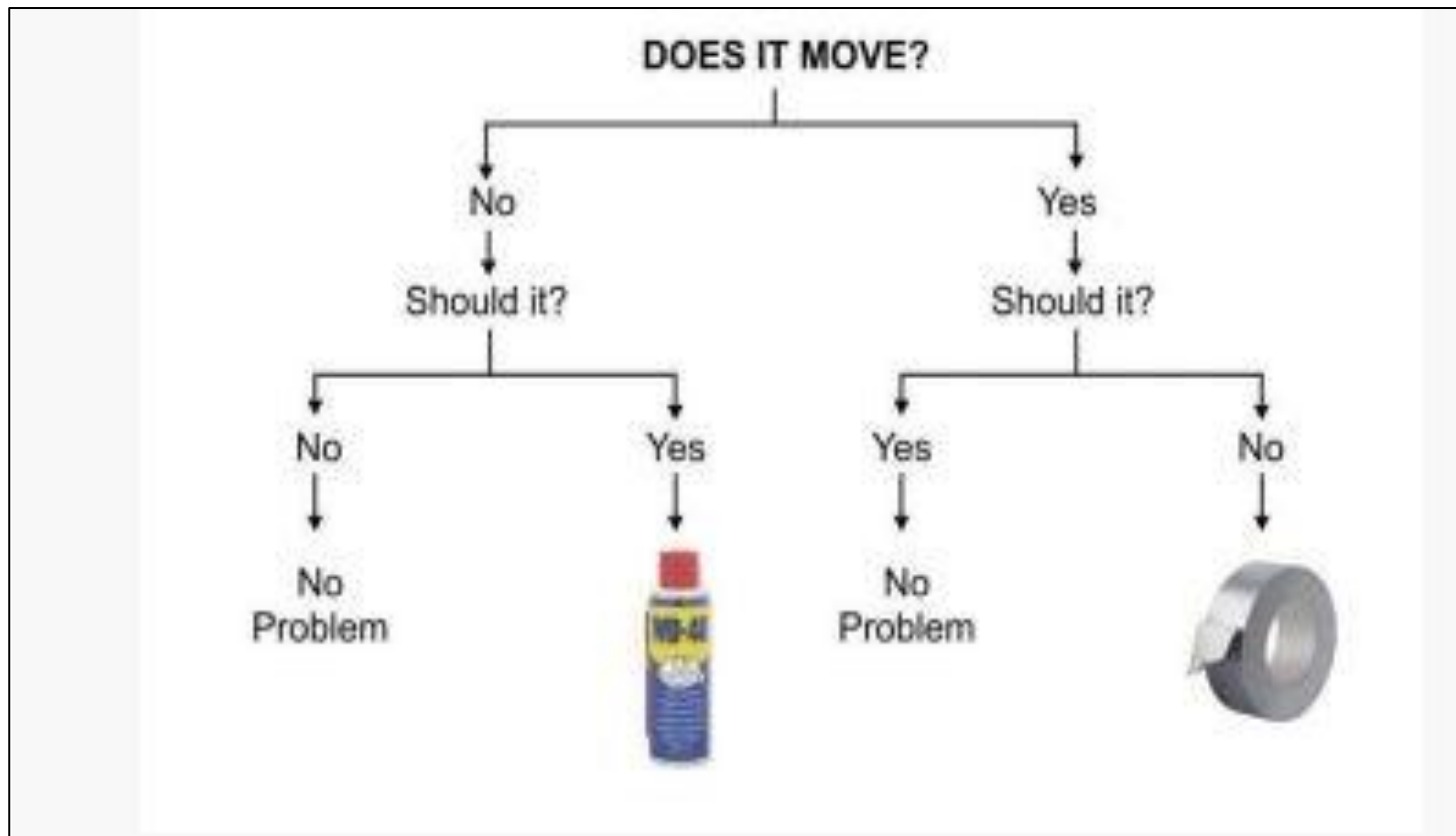
Watery Saucing by IWSC - 'Saucing' the Right Balance





**Trust me – I've done it before!**

**Watery Saucing by IWSC - 'Saucing' the Right Contractor**



**Trust me - if Gaffa can't fix it, it can't be broken !**

**Watery Saucing by IWSC - 'Saucing' the Right Operator**



### **‘Commissioners at the Helm’**

Fred Haigh  
Tom Lang  
Frank Learmonth  
Peter Bevin  
Bill Nimmo  
Don Beattie  
Tom Fenwick





State Recognition of Personal Contributions to 'Water' - Fred Haigh Dam



State Recognition of Personal Contributions to 'Water' - Tom Fenwick Pump Stations

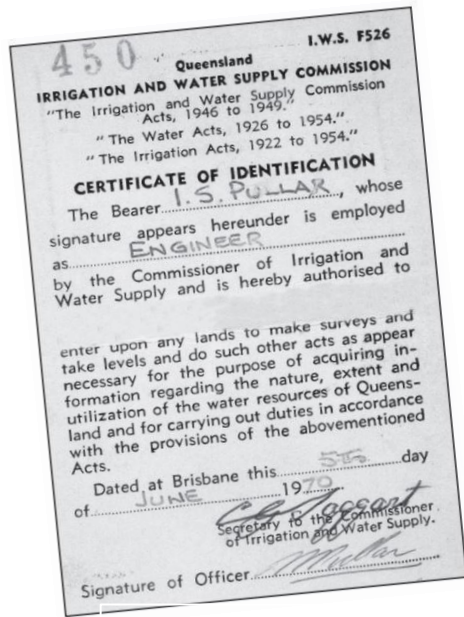


**QWRC - Bundaberg Office, Enterprise Street (1990)**

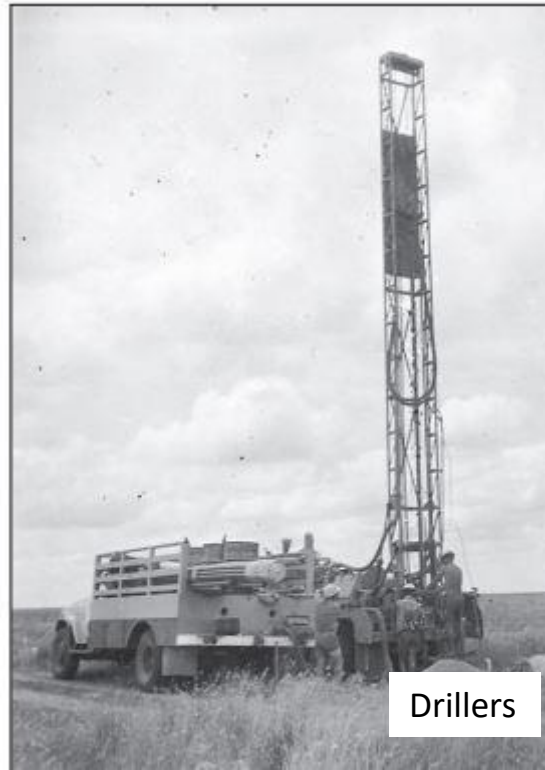


**QWRC - Rockhampton Office Staff (1984)**





IWSC 'Field ID'



Drillers

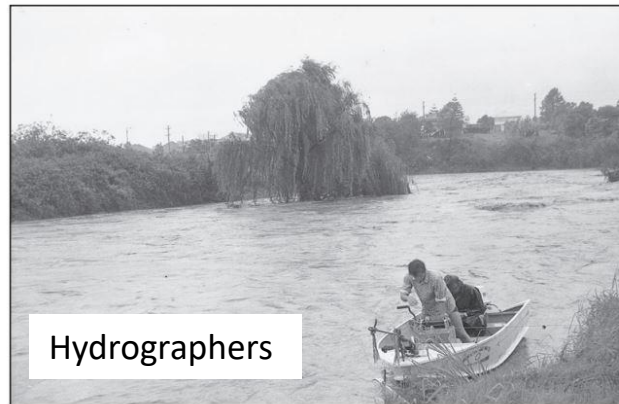


Farm Advisors

QWRC 'Field ID'



Scheme Designers



Hydrographers



Surveyors

## IWSC and QWRC 'IN THE FIELD'

# OUR IWS COMMUNITY - Its 'Water Departments' Nostalgia - Some who have taken to 'Water' (Sh 1 of 2)

<b>ENGINEERING</b>	CRASWELL, R CREDLIN, B	HEENAN, F HENDERSON, P	MCCOURI, P MC EWAN, P	HAUSLER, G HAWORTH, L	IARDREW, D IESKE, C	BELLION, W BORG, O	HARRISON, V HARRIGAN, D	PAYNE, G PEACOCK, G	WHITTAKER, N WILSON, M
ADKINS, P	CROFT, R	HENRY, J	MC FARLAND, I	PRIMAN, R	MCBRYDE, G	BRAMWELL, R	HEIDKE, K	PETERS, B	WOODWARD, C
AIKEN, K	CUERLE, R	HENRY, L	MC GRAH, I	PULLAR, I	MC CONNELL, R	BRANDON, G	HEWSON, K	PETERSON, D	WOKOVICH, B
ALBERS, J	CURRY, G	HERD, R	MC KENNA, M	RANKIN, I	TOOMEY, D	BREADSELL, R	HOLMES, I	PICK, B	WORTH, P
ALLAN, G	CUILER, P	HINRICHSSEN, L	MC KONE, P	READ, J	IRIMARCHI, F	BROWNHALLS, P	HOTCHKES, P	PIOTTO, P	WRIGHT, H
ALLEN, P	DAVIS, B	HITCHCOCK, R	MCLEOD, C	REDMAN, L	IUNNAH, D	BURFEIN, E	HOWARD, P	PITT, K	WRIGHT, J
AMPRIMO, J	DAVIS, L	HITCHMAN, I	MCMAHON, G	REDMOND, D	IURNBULL, J	BURSHAW, R	H/CREWSDON, D	POWER, G	WRIGHT, K
ANDREWS, M	DAY, W	HOLZHEIMER, R	MCMAHON, P	REDMOND, L	IURNER, A	BURSTALL, C	HUGH, S	PRICE, K	YOUNG, B
ARTIEMIEFF, P	DESMOND, H	HOOPER, I	MCMAHON, P	REED, W	UHLMANN, J	BURTON, D	HUBBAS, N	PRIOR, I	<b>HYDROGRAPHY</b>
ARUNAKUMAREN, N	DEVLIN, K	HOORION, A	MELVILLE, E	REES, R	ULLMAN, N	BUTLER, P	JAMIESON, R	RANERI, A	ALEXANDER, D
ASHKANASY, N	DODD, C	HRDLICKA, M	MEYER, P	REID, L	VAN SCHAGEN, F	CAMERON, J	JORDAN, G	RAMAGE, M	ALFORD, R
AYRE, R	DONOHUE, E	HUGHES, A	MIENERI, J	RICHARDS, M	VANDERBYL, I	CAMPBELL, C	KATSADOROS, P	RASMUSSEN, P	ALSTON, D
BAKER, J	DOWLING, N	HUNTER, G	MILLER, E	RICHARDSON, J	VANGRIN, R	CAMPBELL, P	KEATING, R	REASON, A	AMOS, D
BALL, D	DRURY, R	ILIC, S	MILLER, M	RICHARDSON, P	VITE, O	CARMICHAEL, K	KENNY, M	REASON, K	AMOS, G
BARRY, W	DUCZMAL, Z	JAMES, S	MILLS, P	ROBERTS, J	WADE, S	CHOMLYN, L	KENT, A	REDKNE, W	ANSWER, S
BARILETT, M	DUNN, A	JAYASINGHE, U	MOLLER, S	ROBSON, C	WALDUCK, R	CHRISTIANSEN, C	KING, J	REHNIE, D	BARCLAY, G
BARION, M	EASIGATE, W	JOBLING, G	MORAN, P	ROGENCAMP, G	WALKER, F	CLARK, A	KING, N	RIBINSKY, N	BARLETT, L
BASILE, F	ECKERI, I	JOHNSON, P	MOREION, J	ROGERS, R	WALL, P	CLOWES, J	KING, W	ROBERTSON, F	BATURO, W
BAKIER, K	EDWARDS, B	JONES, K	MORSE, J	ROSE, R	WALLAGE, H	COLBURN-MAYNE, A	KILMOSOW, P	ROBINSON, S	BELL, D
<b>BEATTIE, DONALD</b>	EDWARDS, G	JONES, M	MORWOOD, D	ROSE, U	WALLWORK, A	CORBETT, G	LAUNCHBURY, T	ROSS, M	BERAN, G
BEAVERS, P	EGBAR, C	JUCKES, R	MULLER, A	ROSS, D	WALPOLE, R	COWELL, G	LAWLESS, M	ROW, D	BERTRAM, J
BEIZ, E	EHM, K	JUDD, P	MULLER, D	ROSS, K	WARD, J	COWELL, R	LAWRIE, R	RUSSELL, G	BIRD, R
BENNETT, J	FAHEY, G	KAJIAR, A	MUNCK, G	ROSS, N	WARD, I	CRANE, G	LESLIE, M	RYAN, D	BIRD, S
<b>BEVIN, PETER</b>	FAULKNER, B	KAPITZKE, R	MURPHY, E	RUFFIN, J	WARE, M	CRAW, K	LONG, G	SAFONOFF, J	BISHOP, R
BIDGOOD, K	<b>FENWICK, TOM</b>	KEANE, M	MURPHY, J	RUSSELL, A	WATSON, B	CREMER, M	LOWIS, S	SCHRAMM, G	BLOEDL, L
BIGBY, D	FERRIER, I	KELLY, K	MURPHY, K	RUSCO, R	WATSON, K	DALRYMPLE, J	MacARTHUR, R	SCOTT, A	BRADLEY, A
BISHOP, I	FERRIS, P	KEMP, D	MURPHY, P	RYAN, D	WEBBER, W	DALY, T	MACKAY, J	SLATER, K	BRIDGEMAN, S
BOETTCHER, P	FIEDLER, I	KENNEDY, C	MURRAY, A	SADLER, G	WESLEY, R	DAVIS, E	MacPHERSON, A	SLOCUMBE, A	BUCHANAN, S
BOGGIANO, E	FINN, P	KEOGH, P	MURRAY, K	SAUL, D	WHYIE, N	DEHARNO, J	MANNION, P	SLOMAN, A	CALVERT, F
BOI, G	FLANDERS, J	KEOGH, R	MUSO, V	SCHLEE, F	WICKHAM, A	DODD, P	MARSHALL, C	SMITH, D	CAMERON, A
BOWE, M	FOUHY, D	KIRBY, W	MYLNE, J	SCHLEIENS, R	WIECKHOES, I, R	DOLLAR, V	MARSHALL, C	SMITH, L	CAPPS, L
BRACE, L	FRANCIS, J	KIRCHER, G	MYRLEZA, D	SCHOUROOP, J	WILLIAMS, D	DRUITT, L	MARTENS, C	SMITH, M	CASEY, R
BRENNAN, G	GARDINER, D	KRAAK, E	NANGIA, K	SCHULER, G	WILLIS, R	DUGGAN, P	MARTIN, A	SPENSE, B	CHAPMAN, C
BROWN, I	GASKELL, D	KREBS, R	NARDI, P	SCHULIZ, S	WONG, W	DWYER, M	MATHEWS, B	SPERINGS, P	CHATWAY, J
BURGESS, G	GAYDON, B	KUENNE, C	NAVARAJAH, S	SCHULZ, M	WOOD, I	DWYER, R	MATHISON, W	SQUIRE, J	CHEWE, L
BURION, D	GEACH, W	LAN, P	NAYLER, G	SCRIVEN, D	WOOD, D	EASTLEY, T	MAY, L	STAAL, R	CLARK, R
CAMERON, I	GEDDES, R	LANE, W	NGUYEN, K	SECCOMBE, D	YOUNG, G	EDGLEY, B	McCULLOCH, D	STASSE, M	CLEVERLY, M
CAMERON, J	GERRARD, E	LARSEN, D	NILAND, A	SHANNON, B	ZANNAKIS, G	EGAN, A	McDONALD, R	STERNES, P	COLLINGS, S
CANIOR, J	GIBSON, H	LAVERY, N	NOONAN, P	SHARP, W	ZARICKY, J	ELLERTON, D	McDONNELL, M	STUART, L	CONNELL, A
CARR, J	GILBEY, P	LEACH, B	NORTON, C	SIMMERS, G	ZINN, P	EVANS, P	McGILL, G	STUDLEY, M	COOK, A
CARSON, P	GLEESON, P	<b>LEARMONTH, FRANK</b>	O'CONNOR, J	SIMPSON, J	ZULLO, S	FLYNN, W	McGLASHAN, L	SURAWSKI, L	CORBETT, A
CASSIDY, G	GORDON, C	LEE, E	OEHLEIRICH, G	SKERMAN, A	<b>DRAFTING</b>	FOLKMAN, V	MERRETT, G	TAYLER, P	CREEVEY, W
CATON, G	GRAHAM, L	LEE YOUNG, S	OLE, A	SMITH, G	ABLIIT, N	GACHOWICZ, L	MERRIN, M	TERRY, R	CROKER, G
CATON, N	GRAN, I, G	LEMIN, R	ORD, M	SMITH, J	ABRAHAM, G	GALLIGAN, P	MILLARD, G	THOMPSON, D	CUTLER, A
CHALMERS, I	GRAY, S	LEPPER, M	PAGAN, A	SCOUTER, W	ALLEN, A	GARVEY, M	MILLER, P	THWAITE, R	DAVEY, G
CHAN, M	GREEN, B	LEITCHFORD, I	PALMER, E	SALLMAN, G	ALLEN, W	GEATA, P	MILLER, R	TRAMACCHI, S	DAVIS, A
CHAPPLE, L	GREEN, J	LIDSTER, P	PALMER, J	SARKEY, G	ALLISON, S	GEISLER, D	MILLER, R	TRIKASCH, G	
CLAYDON, G	GRICE, B	LIEVESLEY, A	PAPPIN, L	STEEN, B	AMPRIMO, J	GIARUSSO, K	MILNE, B	TULLY, I	
CLEWLEY, M	GUPPY, R	LOGAN, J	PARESI, G	THACKER, D	ANDERSON, K	GIDLEY, M	MOLLOY, P	VIZE, A	
COCK, D	HADGRAFT, R	LOOS, E	PEARCE, K	THOMPSON, P	ANDREWS, M	GILLARD, R	MOORE, A	VIZER, A	
COE, P	<b>HAIGH, FRED</b>	LOY, A	PEGG, M	HIBALDI, J	ANDREWS, P	GILSHARD, D	MYATT, P	VOWLES, C	
COE, R	HALEY, W	LUCKE, W	PERKINS, J	IOMERINI, M	BALCHIN, L	GOODCHILD, G	NAVRUK, A	WATT, D	
COLLINS, D	HANKS, I	LUCY, P	PERKINS, J	STEINDL, R	BALSHAW, R	GORIAN, R	NEVIN, D	WATT, J	
CONNELLAN, D	HANSEN, P	LUCY, R	POLLARD, D	STEVENSON, B	BARFF, R	GREEN, D	NEWELL, J	WEEKS, R	
CONNOR, R	HARLEY, P	LUSIS, A	POLLARD, G	SEWARI, G	BARTELM, M	GUTRIDGE, H	NEWMAN, S	WHEELER, R	
COOK, C	HASIE, J	MACKENZIE, K	POOLE, I	SEWARI, R	BAKTER, A	HADE, R	O'REILLY, R	WHITE, D	
COOK, J	HARWOOD, A	COULIS, D	POPLAWSKI, W	SURENDRA, M	BEALE, J	HALES, G	OTTO, L	WHITE, N	
COONEY, C	HAZEL, C	COWLEY, R	POHIS, J	SYME, W	BELL, R	HANNEMANN, K	PATON, G		



PROUD OF OUR ASSOCIATION

Placemat 2 of 6

RECOLLECTIONS ONLY (NOT OFFICIAL RECORDS). FIRST ATTEMPT TO RECALL 100 YEARS OF DEPARTMENTAL 'WATER' PERSONNEL (starting with THE PAST 50 YEARS). Source: Long-retired IWS colleagues.



# OUR IWS COMMUNITY - Its 'Water Departments' Nostalgia - Some who have taken to 'Water (Sh 2 of 2)

HYDROGRAPHY	LAURINATIS, G	SCHOLZ, H	HYDROGEOLOGY	Kennedy, B	Henricksen, K	BERGMAN, C	DORE, R	KAPPU, A	MILSSON, P	SMITH, E
DEW, R	LEESERSTEN, M	SCHWENKE, F	Bedford, K	Ledlie, G	Heness, A	BERMINGHAM, M	DUNN, B	KEANE, H	O'BRIEN, J	SMITH, J
DICKFOSS, R	LEITE, P	SCIACCA, M	Cox, R	Locke, M	Heness, M	BERTRAM, G	DUNN, J	KEENE, G	O'DONOHUE, A	SMITH, K
DORE, P	LOBGEIER, V	SEABROOK, A	Ellis, R	Mantle, A	Heness, R	BLAK, G	DYSON, O	KELLY, K	O'NEILL, K	SMITH, M
DORFEL, P	LONG, D	SEABROOK, A	Evans, P	Martens, C	Howard, C	BLAKE, K	EDGAR, K	KENNEDY, K	ORCHARD, L	SODEN, G
DOWNING, A	LONG, G	SEARLE, N	Free, D	McDonald, B	Hunt, D	ELINES, L	EDWARDS, S	KENNING, G	O'SEALTON, J	SPENCER, D
DRAKE, G	LOWEY, T	SEVERE, M	Foster, L	McDonald, I	Johnson, B	ELMOFIELD, H	ELMS, S	KENNY, C	O'SHEA, T	STAPLES, A
DRIVER, J	MAHONEY, F	SIMS, C	Hillier, J	McNee, D	Kammerling, B	BOBERMAN, D	ENGSTROM, F	KERSWELL, P	OTLEDGE, V	STEEDMAN, E
DUNNE, N	MANLEY, V	SINCLAIR, S	Huxley, B	Milligan, G	Kennedy, J	BOND, D	EVANS, M	KILPATRICK, L	OTT, A	STEEL, G
ELLIOTT, A	MARTIN, WP	SMITH, D	Leach, L	Nee, D	Keogh, B	BOSHARD, D	FARRELL, R	KILVINGTON, C	PARKINSON, A	STEELE, L
ENTWISLE, O	MAULE, G	SMITH, P	Lloyd, J	Nichols, M	King, J	BOYD, N	FEMNER, T	KINGSTON, R	PAROZ, L	STENHARDT, K
EZZY, A	MAY, S	SMYTHE, K	Mallet, C	O'Callaghan, B	Kurtz, J	BRANDELL, W	FLAMINGO, M	KRAUT, H	PARRY, K	STERNES, S
FERRIER, D	MAYNARD, R	SPANN, P	McEnery, M	O'Donnell, P	Kusay, E	BRASSINGTON, J	POSSETT, W	KULPA, I	PASHEN, J	STEWART, W
FIEDLER, P	MCDERMOTT, H	STEPHENSON, J	McNeil, A	Phie, D	Lord, I	BRENNAN, N	FRANKEL, J	KYPRIOS, G	PATON, G	STONE, I
FINDLAY, R	MCDUGALL, A	STICKLAN, W	McNeil, V	Pickering, D	Luchterhand, J	BRIDSON, W	FRANKLIN, D	LARSEN, V	PAYNE, A	STONE, L
FLEETWOOD, R	MCGILLVRA, G	STUMER, P	Munro, D	Powell, P	MacNamara, P	BROWN, D	FRATER, G	LEIPER, M	PETRACCI, M	STRAWBRIDGE, E
FRIBID, R	McKAVANAGH, K	THOMPSON, N	Myne, J	Friddey, G	McGowan, L	BUCHANAN, J	FREDLINE, S	LIDDELL, R	PETT, C	SURMON, R
GALVIN, D	McKINLAY, J	TRAVERS, T	Pearce, B	Priebbenow, R	McGowan, R	BUGEJA, A	GANNON, R	LISTER, M	PETERSON, W	SWAFFER, B
GANNON, L	McPHEE, R	TUCKER, A	Shannon, H	Riehl, B	Miller	BURGESS, T	GAZOLLA, E	LLEWELLYN, E	PEZET, K	SWENDSEN
GAYLORD, L	MEAD, W	VAN DE HEIDE, L	Whitnee, P	Ryan, T	Murray, J	BURNHAM, W	GENITO, A	McPHERSON, J	PICKERSGILL, G	TAGGART, C
GERFAED, R	MILLER, A	VAUGHAN, G	SURVEYING	Samson, B	Neilson, D	BUSHBY, M	GIBBS, J	MADIGAN, D	POLLARD, D	TENNY, C
GILLIES, G	MINCHER, A	VAUGHAN, W	Alarcon, R	Scott, P	Peters, S	BUTLER, L	GIDLEY, M	MAHER, M	PONT, J	THOMAS, I
GOODMAN, W	MOBBS, S	VOLTZ, P	Anderson, K	Shanahan, N	Plint, H	BYRNE, J	GOWLETT, K	MANNING, D	POOLE, G	THOMSEN, R
GORDON, P	MOORE, C	WALDRON, I	Baxter, S	Sherrington, D	Rasmussen, J	CALVIN, D	GRAHAM, F	MANSFIELD, J	PORTER, E	THOMPSON, P
GRAMS, M	MOORE, L	WALKER, D	Bent, G	Sleep, T	Richings, L	CAMPBELL, C	HALL, F	MARSHALL, R	PREST, J	THWORTH, K
GRANAT, S	MORAN, I	WALKER, E	Berriman, T	Smith, J	Rogers, B	CAMPBELL, I	HAMPSEED, D	MARTIN, K	FURCELL, P	TOOHEY, J
GRANIC, H	MORRISON, A	WALLACE, I	Blyth, J	Smyrell, J	Rowlands, H	CARRINGTON, S	HANLEY, R	MARTIN, R	QUINN, G	TOWNSEND
GRIFFITHS, D	MURDOCH, A	WALSH, V	Brighouse, G	Sneddon, E	Russell, D	CARROLL, S	HANNAM, M	MASON, G	RANDALL, A	TREASURE, L
HAGENMAIER, C	MURRAY, P	WEBB, P	Card, O	Spearritt, C	Saddler, B	CARTER, K	HANSEN, G	MATTHEWS, D	RATAJCZAK, J	TRUGNELL, M
HALE, R	NARRACOTT, G	WEBB, B	Castle, J	Spirings, P	Schmike, B	CASTIGLIONE, V	HEARN, J	MC CARTHY, P	REES, M	TUESLEY, J
HALLIDAY, B	NEDORISOFF, N	WHITE, I	Chamberlain, J	Stein, J	Skilington, F	CASTLES, N	HENNESSY, R	MCDONALD, C	REES, S	TURBAINE, M
HANRAHAN, N	NETZEL, K	WILLIAMS, L	Charles, J	Sunness, F	Smith, D	CAVANAGH, N	HESSE, S	MCDONOUGH, S	REED, D	VAN PEPERSTRATEN, P
HARRIS, B	NEWMAN, R	WINTEL, K	Clarke, G	Thelander, E	Smith, G	CLANCY, G	HILL, H	MCGRAW, P	RICHARDSON	VINCENT, P
HARRIS, D	NOBLE, B	WOLFE, A	Cleary, T	Toone, G	Stevenson	CLARK, D	HILLIER, P	MCINTOSH, D	RIVERS, R	VIVERS, M
HECKENBERG, J	NYC, W	WRAGGE, R	Coles, D	Toonen, C	Stower, J	CLOHERTY, A	HOGAN, M	MCKAY, A	ROBINSON, E	WALKER, R
HENDLE, J	OGDEN, J	WYPER, W	Cook, C	Turner, K	Svensson, J	CONNOLLY, J	HOGAN, N	MCLEAN, D	ROBINSON, V	WALL, R
HICKS, B	O'REILLY, O	YOUNG, D	Coutts, T	van der Heide, H	Watts, M	COOK, B	HOLOHAN, L	MCLEAN, G	ROHRIG, J	WALLS, R
HILL, S	O'SHEA, J	GEOLOGY	Craig, I	Volker, P	White, B	COOKE, C	HOPKINS, N	MCMAHON, P	ROGERS, G	WALPOLE, C
HOLLOWAY, H	OTTO, G	Ashley, D	Deert, B	Walsh, P	Whittington, B	COOPER, J	HOPKINS, R	MCMPHERSON, J	ROGERS, R	WARD, H
HOLM, T	PACKETT, R	Barton, N	Deen, R	Wood, J	Windhurst, C	COWLEY, K	HORN, K	MEREDITH, W	ROSSER, G	WARD, K
HOOPER, A	PAPPIN, L	Greedy, P	Dowling, J	Woodhead, R	Young, J	CRAIG, R	HORNE, H	MEWBURN, B	ROSSI, S	WARREN, L
HOPPER, M	PARKER, S	Dryden, G	DRILLING	ADMIN	CRANITCH, M	HOSKINS, I	MILLAR, D	ROWAN, C	WARREN, M	
HUNT, P	PARSON, W	Eades, G	Fong On, J	Britten, C	ADAMS, T	CROOK, B	HUGHES, K	MILLER, L	ROWLEY, D	
JENKINS, W	PATTERSON, L	Eadie, A	Foster, D	Brown, K	AHEARN, A	CROTTY, D	HUMPHREY, V	MOESBERGEN, M	ROYLE, M	
JOYCE, M	PAYNE, S	Forster, D	Fox, T	Carneron, C	AHERN, J	CRUTCHER, J	HUNTER, D	MOLINEUX, S	RUSSELL, C	
KEALLY, A	PEGG, S	Haakins, A	Froemel, G	Carr, P	ALLAN, B	CRYAN, M	HUNTER, J	MOORE, P	RULEDGE, R	
KELEHER, P	PITTS, J	Hovden, T	Gardener, C	Castles, A	ARCHIE, K	CURTIN, J	HUNTER, W	MOORE, R	RULEDGE, V	
KELLY, J	PONCOCK, G	Ivins, M	Gracey, G	Clifford, F	ARMSTRONG, L	DABELSTEIN, L	HURST, B	MOORE, T	SANG, R	
KELLY, M	POWELL, J	Laubach, P	Gunnell, P	Cochrane, P	AUSTIN, D	DALY, T	HUTCHINSON, L	MORGAN, P	SAUNDERS, P	
KELLY, P	PURICH, P	Lawson, T	Hansen, C	Dean, M	BACKHOUSE, A	DAUNT, H	IRVINE, R	MAULONI, A	SCHOUTEN, J	
KELLY, S	RADKE, A	Lester, J	Harvey, J	Dixon, J	BAILEY, S	DAWE, B	JARROTT, B	MUIR, K	SCHULTZ, D	
KELSEY, P	REURICH, W	Miles, G	Dmsch, C	BARNETT, D	DAY, A	JENNINGS, G	MULHOLLAND, D	SENIOR, L	SENEK, A	
KENDRICK, P	RIDLER, J	Plaster, P	Duncan, B	Barry, M	DEIGHTON, G	DEMY-GEROE, A	JOHNSON, G	MURTAGH, M	SHANNON, K	
KERR, P	ROCCA, I	Rasser, R	Hopp, A	Erikson, T	BAUER, G	DEWAR, D	JOHNSON, J	NEUBECKER, M	SISON, D	
KILPATRICK, G	ROSE, R	Pahman, T	Hosie, D	Fox, K	BAUER, J	DINDALE, C	JOHNS, J	NEWICK, D	SKREELIN, E	
KLASSEN, K	ROSS, K	Oughen, B	Geobels, P	Houston, D	SAXTER, G	DIXON, T	JOKWOOD, K	NICHOLLS, T	SLAMAN, R	
KOTIL, M	ROWLAND, A	Sweet, T	Huston, W	Gibson, B	BAYFIELD, K	DONNELLY, S	JULES, C	NICHOLS, G	SMALL, T	
KVASSAY, G	RUSSELL, S	Wayne, K	Jardine, P	Paice, D	BEAL, H	DONOVAN, C	JUST, M	NICOL, J		
LARSEN, P	McLEAN, B	Jones, T	Harth, G	BERNETT, P						

IRRIGATION ACT of 1922



PROUD OF OUR ASSOCIATION

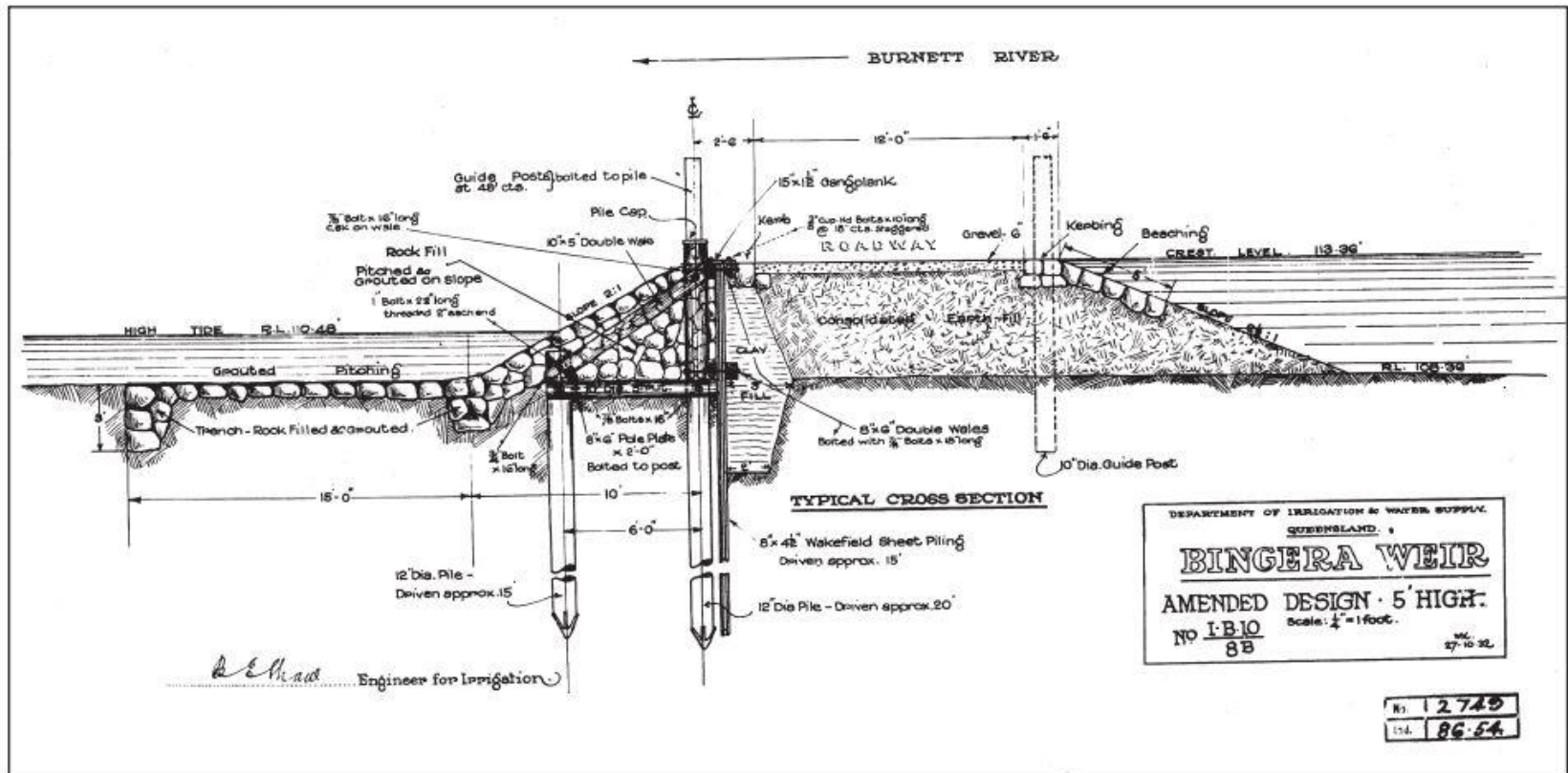
Placemat 3 of 6

RECOLLECTIONS ONLY (NOT OFFICIAL RECORDS). FIRST ATTEMPT TO RECALL 100 YEARS OF DEPARTMENTAL 'WATER' PERSONNEL (starting with THE PAST 50 YEARS). Source: Long-retired IWS colleagues.

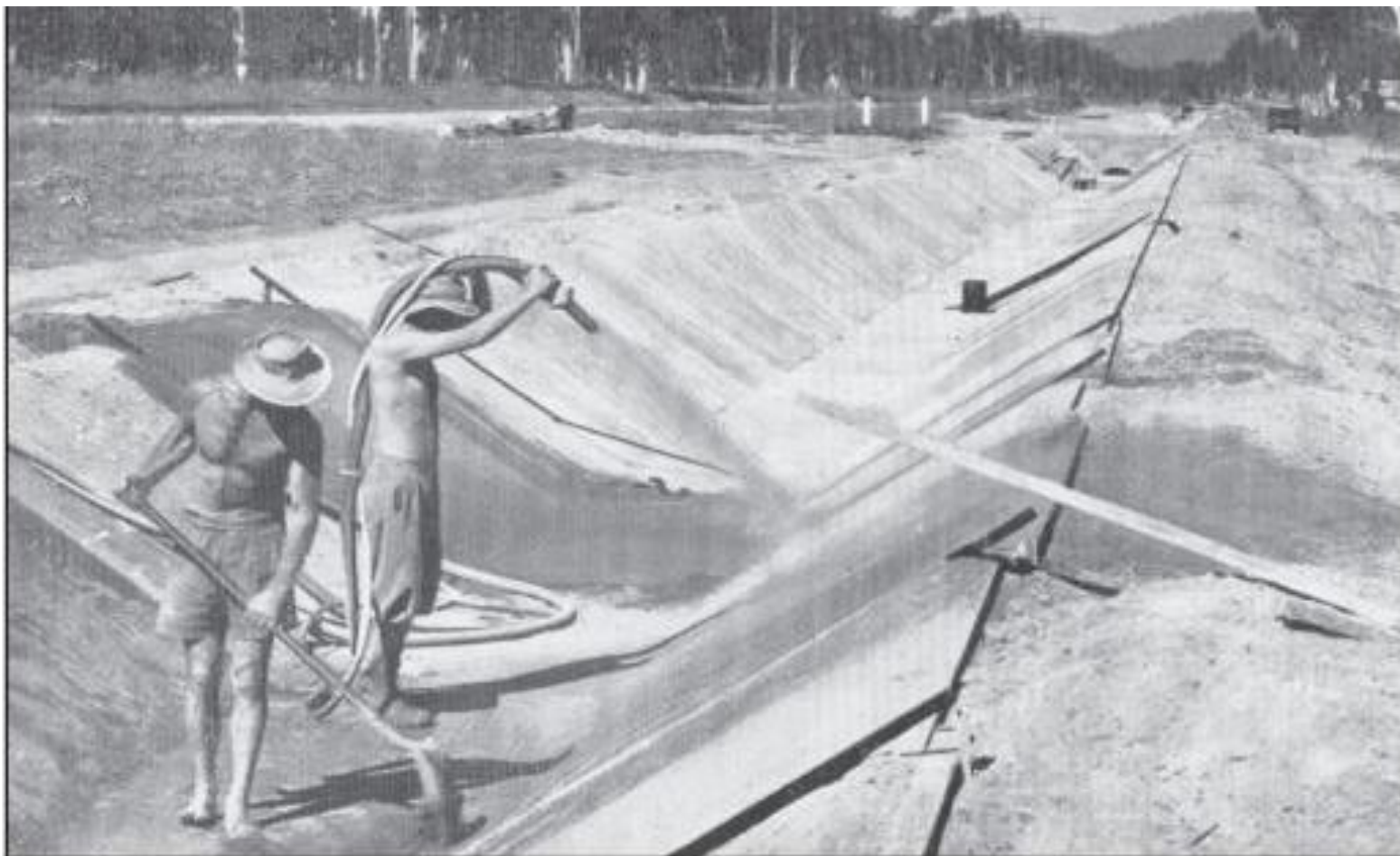


# Things IWS did

- PLANNING
- DESIGNING
- BUILDING
- MANAGING
- ADVISING



IWSC - Design and Drafting – 1954  
(pre-CAD)



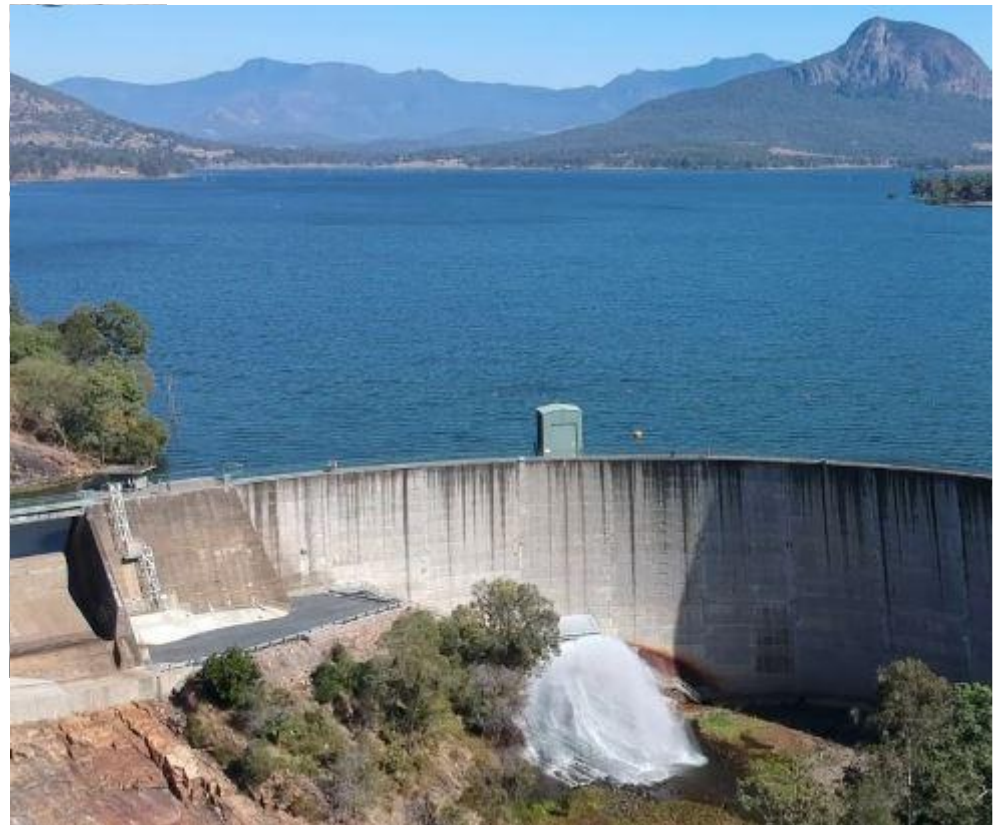
**IWSC Day Labour Workforce - Clare Main Channel**  
(pre-WH&S)





## Moogerah Dam

Under Construction by IWSC (Late 1950s)





**Tinaroo Falls Dam**  
Constructed by IWSC

**sunwater**



**Beardmore Dam**  
Constructed by IWSC





**Tinaroo Falls Dam; Bench Flume**  
Constructed by IWSC (1950s)

**sunwater**





**Irrigation Channels**  
Constructed by IWSC / QWRC  
(1950s to 1980s)

Mareeba-Dimbulah  
Burdekin Haughton  
(photos courtesy Sunwater)

**sunwater**





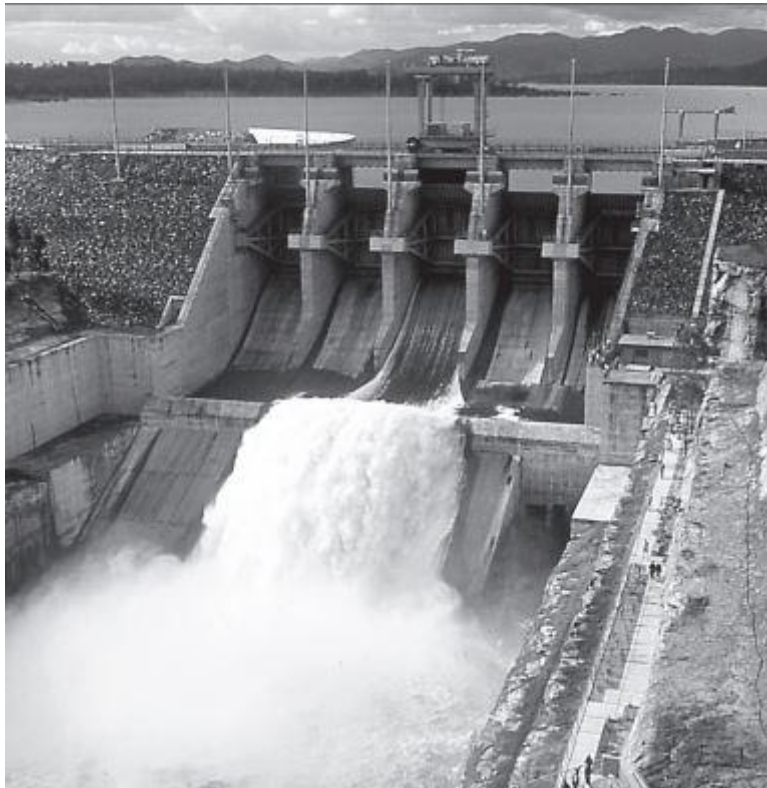
**Fairbairn  
Dam**  
(built by IWSC)

**sunwater**



**Burdekin  
Falls Dam**  
(built by QWRC)





**Wivenhoe Dam**  
Built by QWRC



**Awoonga High Dam**



**Irrigation Areas** – designed and developed around the state by IWSC / QWRC (eg Bundaberg)

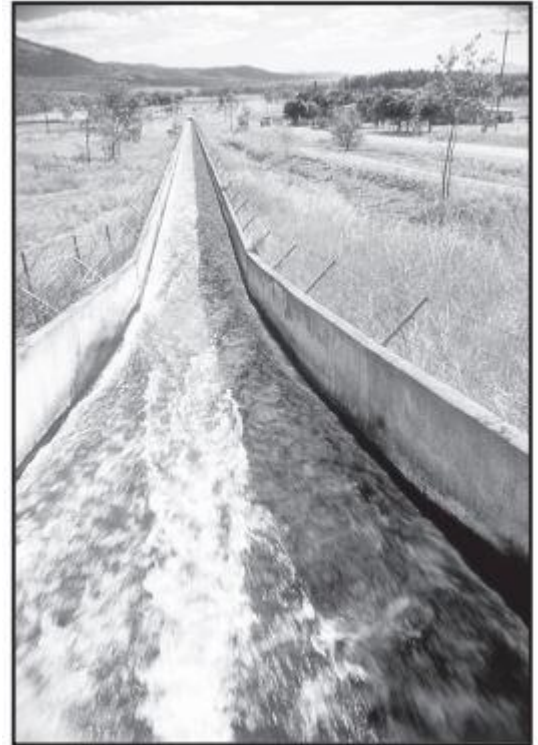




**Irrigation Areas** – aerial view of Eton Irrigation Area (Kinchant Dam in background)

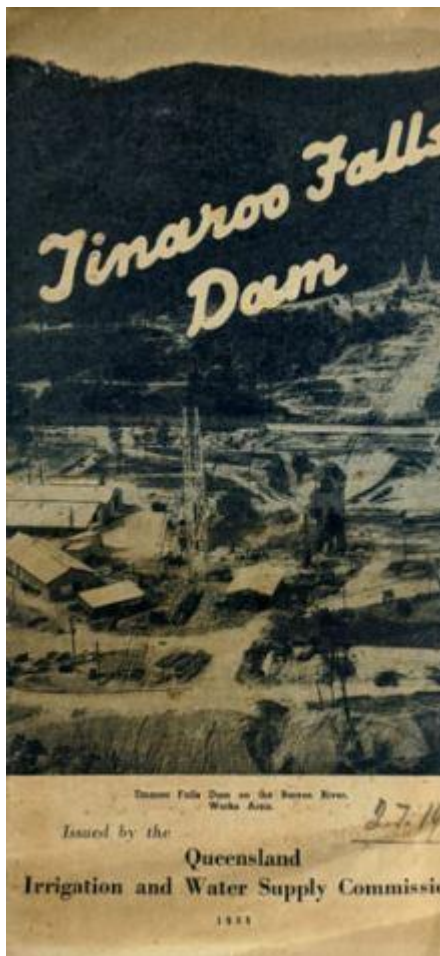


*Stan Ross celebrates the first water diversion  
over the Great Dividing Range*



*Bench flume*

## **Irrigation Channels**



IWSC – 'hot off the press'





**IWSC** - 'on the streets'  
Delivering early 'Water' messages  
(Australia Day 1953)

12

11S

1G

1E

STORE

JM

atured  
pics. etc.  
& CO.

stay.

IRANT

CTOR

MACKAY

No. 460.

OTORS

DEALERS

track too well, as he could not hold the corners, but he made the pace a cracker. Len Spears, of Kyogle, N.S.W., made the going good, but had the same trouble as Des. on the corners. Our local lads, Billy James, Mick Carmichael, and Len McFarlane, who also turned the race on, showed they could handle the track without any trouble.

Len McFarlane, one of the Cairns Club's ace track riders, may worry our Brisbane top-line riders when he gets into good form.

Billy James will be hard to beat this track season, as he is a very much improved rider.

The time for the eight laps A grade scratch race was 4min. 5sec.

The B grade two-lap handicap was won by Mick Howard (W.M.), 50 yards. Les Jones (W.M.), 20 yards. was second, and George Atherton (W.M.), 55 yards, third. Time, 55sec.

**IRRIGATION AND WATER SUPPLY COMMISSION — QUEENSLAND**  
**Job No. 1655—"ENRIGHT"**

Tenders, closing at noon on Tuesday, 31st October, 1950, are invited for the supply, delivery and erection of a Windmill and Pumping equipment at "Enright" excavated tank, situated about 32 miles east of Charleville, on the Charleville-Morven Stock Route.

Tenders should be addressed to the Secretary, Irrigation and Water Supply Commission, Executive Building, George Street, Brisbane, and endorsed "Tender for Enright Windmill and Pumping Equipment."

Specifications may be inspected or purchased for £1/1/- each at the Office of the Commissioner, Brisbane, or inspected at the Office of the Murweh Shire Council, Charleville.

A preliminary deposit of 1 per cent. is to accompany each tender.

The lowest or any tender not necessarily accepted.

**D. F. ERICKSON,**  
Secretary to the Commissioner of Irrigation and Water Supply,  
Executive Building, Brisbane,  
20th September, 1950.

**IRRIGATION AND WATER SUPPLY COMMISSION — QUEENSLAND**  
**Job No. 1691—"MUCKADILLA"**

Tenders, closing at noon on Tuesday, 31st October, 1950, are invited for the supply, delivery and erection of a windmill and pumping equipment at "Muckadilla" excavated tank, situated about 14 miles from Muckadilla, on the stock route between Mitchell and Roma.

Tenders should be addressed to the

into the hole.

At his very first attempt the novice had realised the ambition of every golfer; but he did not seem excited.

His next drive was almost as good. Again the ball landed on the green, but this time it stopped short a few inches from the hole.

Dodson turned apologetically to his partner:

"How silly of me!" he exclaimed. "I've missed it!"

**IRRIGATION AND WATER SUPPLY COMMISSION — QUEENSLAND**  
**Job No. 1616—"VICTORIA"**

Tenders, closing at noon on Tuesday, 31st October, 1950, are invited for the supply, delivery and erection of a windmill and pumping equipment at "Victoria" excavated tank, situated about 7 miles north-west of Morven, on the Morven-Augathella stock route.

Tenders should be addressed to the Secretary, Irrigation and Water Supply Commission, Executive Building, George Street, Brisbane, and endorsed "Tender for Victoria Windmill and Pumping Equipment."

Specifications may be inspected or purchased for £1/1/- each at the Office of the Commissioner, Brisbane, or inspected at the Office of the Murweh Shire Council, Charleville.

A preliminary deposit of 1 per cent. is to accompany each tender.

The lowest or any tender not necessarily accepted.

**D. F. ERICKSON,**  
Secretary to the Commissioner of Irrigation and Water Supply,  
Executive Building, Brisbane,  
20th September, 1950.

**IRRIGATION AND WATER SUPPLY COMMISSION — QUEENSLAND**  
**Job No. 1667—"COMBANNING"**

Tenders, closing at noon on Tuesday, 31st October, 1950, are invited for the supply, delivery and erection of a windmill and pumping equipment at "Combanning" excavated tank, situated about 23 miles west of Charleville, on the Adelaide-Charleville Stock Route.

Tenders should be addressed to the Secretary, Irrigation and Water Supply Commission, Executive Building, George Street, Brisbane, and endorsed "Tender for Combanning Windmill and Pumping Equipment."

Specifications may be inspected or

**IN A DAZE**

"How did the Smith wedding go off?"

"Fine, until the parson asked the bride if she'd obey her husband."

"What happened then?"

"She replied, 'Do you think I'm crazy?' and the groom, who was in a sort of a daze, replied, 'I do.'"

**IRRIGATION AND WATER SUPPLY COMMISSION — QUEENSLAND**

Tenders, closing at noon on Tuesday, 7th November, 1950, are invited for the supply, delivery and erection of Windmill and Pumping equipment as under:—

**Job No. 1649—"Alroy":** At excavated tank, situated about 44 miles from Longreach.

**Job No. 1567—"Aristalah":** At excavated tank, situated about 34 miles from Longreach.

**Job No. 1656—"Shanty (2)":** At excavated tank, situated about 43 miles from Longreach.

Tenders should be addressed to the Secretary, Irrigation and Water Supply Commission, Executive Building, George Street, Brisbane, and endorsed "Tender for Windmill and Pumping Equipment."

Specifications may be inspected at the Office of the Commissioner, Brisbane, Longreach and Rockhampton, or at the Office of the Longreach Shire Council, Longreach.

A preliminary deposit of 1 per cent. is to accompany each tender.

The lowest or any tender not necessarily accepted.

**D. F. ERICKSON,**  
Secretary to the Commissioner of Irrigation and Water Supply,  
Executive Building, Brisbane,  
27th September, 1950.

**IRRIGATION AND WATER SUPPLY COMMISSION — QUEENSLAND**  
**Job No. 1613—"VINDEX"**

Tenders, closing at noon on Tuesday, 7th November, 1950, are invited for the supply, delivery and erection of a Windmill and Pumping equipment at "Vindex" excavated tank, situated about 33 miles from Winton on the Winton-Longreach Stock Route.

Tenders should be addressed to the Secretary, Irrigation and Water Supply Commission, Executive Building, George Street, Brisbane, and endorsed "Tender for Vindex Windmill and Pumping Equipment."

Specifications may be inspected or

**IRRIGATION AND WATER SUPPLY COMMISSION — QUEENSLAND**  
**TENDERS — EARTH MOVING EQUIPMENT**

Tenders closing at noon on Friday, 3rd November, 1950, are invited for the following:—

One-only Tracked Crane with 70ft. boom to lift 15cwt. at 25ft. radius, and complete with 1 cubic yard dragline equipment.

Four-only 1/2 cubic yard Shovels, new or reconditioned.

Tenders should be addressed to the Secretary, Irrigation and Water Supply Commission, Executive Building, George Street, Brisbane, and endorsed "Tender for Coreena Windmill and Pumping Equipment."

Specifications may be inspected or purchased for £1/1/- each at the Office of the Commissioner, Brisbane, or inspected at the Office of the Aramac Shire Council, Aramac.

A preliminary deposit of 1 per cent. is to accompany each tender.

The lowest or any tender not necessarily accepted.

**D. F. ERICKSON,**  
Secretary to the Commissioner of Irrigation and Water Supply,  
Executive Building, Brisbane,  
26th September, 1950.

**MAIN ROADS COMMISSION—BRISBANE, QUEENSLAND—ENGINEERS**

Applications are invited for appointment to the following positions on the staff of the Main Roads Commission:—

One District Engineer, Grade 1. Classification: Min. 1955; max. £1195.

Four Engineers, Grade 1. Classification: Min. 1890; max. £1095.

Three Engineers, Grade 2. Classification: Min. £730; max. £835.

Three Engineers, Grade 3. Classification: Min. £630; max. £740.

Salary subject to basic wage adjustment, which at present is an addition of £13 per annum. A degree in Civil Engineering from a recognised University or equivalent is an essential qualification. Successful applicants may be appointed on probation for six months, and may be required to serve in any part of the State. The Commission at present has offices at Brisbane, Rockhampton, Mackay, Townsville, Cairns, Cloncurry, Barcaldine and Roma. Applications should be made by letter containing particulars as to full name, age, qualification and experience. Ex-servicemen should furnish full particulars regarding war service. Applications with copies of testimonials should be forwarded in envelopes endorsed "Application for Advertised

IWSC - 'in the papers' - Calling for Tenders  
Earth moving equipment; delivery and installation of windmills on Stock Routes (1950)





## IWSC - 'on the Plaques'

Moogerah Dam  
Fairbairn Dam  
Chinchilla Weir







# **IWS – Its Journey to now**

- AN INSTITUTION IN CHANGE
- WATER REFORM

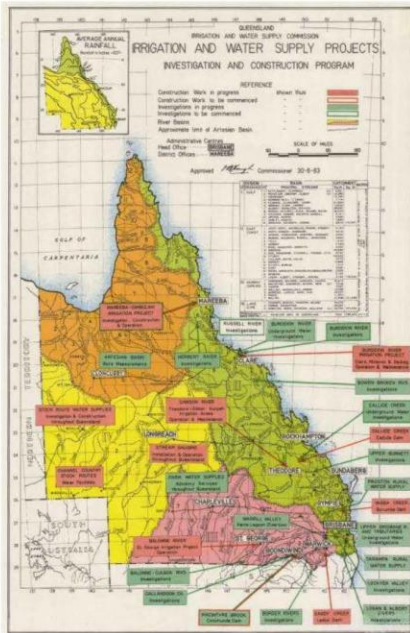
## OUR IWS COMMUNITY – Its Two Sides

### IWS - THE WORK SIDE OF 'WATER'

One 'Water' Main – Many 'Water' Branches  
(building 'Our IWS Community' over 100 yrs)

(IRRIG and WATER SUPPLY COMMISSION  
and ITS MANY SUCCESSORS)

This 1963 report map came from a day-and-age when our IWS community could lay claim to be doing 'everything'. There is a fair chance that the map was produced in the branch affectionately known as PP (*Project Planning*) and was overseen by Supervising Draftsman 'Tommy' Thomas. It is from the 1963 Annual Report as presented to parliament by then Commissioner Fred Haigh.



Amongst its many highlights are progress of construction at Callide and Borumba Dams (*Construction Branch*); operation and maintenance of the Mareeba Dimbulah Irrigation Project (*Operations Branch*). On the investigations side the 'Burdekin River' gets a mention (*Project Planning Branch*), at a time when the Burdekin Scheme consisted only of Clare; Millaroo and Dalbeg; then there are Stream Gauging Installations (*Rivers and Streams Branch*); Stock Route Water Supplies Investigation and Construction; Underground Water Investigations & Artesian Basin Monitoring (*Groundwater Branch*); Farm Water Supplies Advisory Services (*Farm Water Supplies Branch*); Rural Water Supplies (*Irrigation Branch*). Reporting of civil design progress including hydraulic modelling and materials testing (*Designs Branch*), as well as progress on the mechanical and electrical side (*Mechanical and Electrical Branch*) featured in another section of the Annual Report. Last but not least there was administration (*Admin Branch*) which oversaw offices at: Mareeba; Clare; Cloncurry; Longreach; Rockhampton; Theodore; Bundaberg; Charleville; Gympie; St George; Warwick; and Goondiwindi



IRRIGATION ACT OF 1922



PROUD OF OUR ASSOCIATION

### WRRRA - THE SOCIAL SIDE OF 'WATER'

One 'Water' Body - Two 'Water' Arms  
(cradling 'Our IWS Community')



WRRRA GETS INTO THE ACT. The WRRRA was formed in 1985 and is a 'Small Incorporated Association' (under Assoc Incorporation Act 1981).

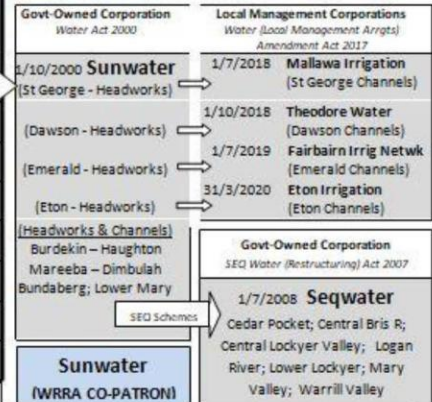
### 'WATER DEPARTMENTS' ARM

Before 1881, 'Water' was in the Harbours & Rivers Dept (Treasury Waterworks Branch - EIC Consulting Engineer John Baillie Henderson)

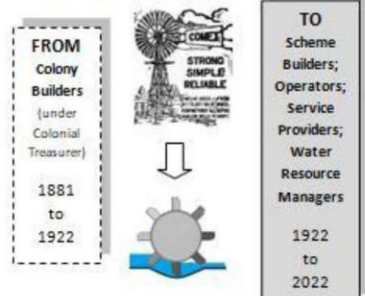
18/10/1881 Hydraulic Engineer's Dept (later WS Dept)  
to  
(1<sup>st</sup> Hydraulic Engineer John Baillie Henderson)  
18/10/1922 A Dept under the then of the Colonial Treasurer  
Irrigation Act of 1922

18/10/1922	15/2/1932	Irrig & Water Supply Comm
15/2/1932	1/8/1947	IWS sub-Dept (of Lands Dept)
Irrigation and Water Supply Commission Act of 1946		
1/8/1947	12/3/1979	Irrig & Water Supply Comm
12/3/1979	31/12/1992	Qld Water Res Comm (QWRC)
31/12/1992	26/2/1996	Water Resources Comm (WRC)
1/7/1997	1/10/2000	State Water Projects (DNR)
26/2/1996	22/2/2001	Dept of Natural Resources (DNR)
22/2/2001	12/2/2004	Dept of Natural Resources & Mines (DNRM)
12/2/2004	25/8/2004	Dept of Natural Resources, Mines & Energy (DNRME)
25/8/2004	2/2/2006	Dept of Natural Resources & Mines (DNRM)
2/2/2006	13/9/2006	Dept of Natural Resources, Mines & Water (DNRMW)
13/9/2006	26/3/2009	Dept of Natural Resources & Water (DNRW)
26/3/2009	3/4/2012	Dept of Environment & Resource Mgt (DERM)
Machinery of Government (MOG) Changes wrt 'WATER' (2012)		

### 'WATER CORPORATIONS' ARM



### GROWTH OF OUR IWS COMMUNITY



RESOURCE MGT  
and REGULATION



RESEARCH and  
MODELLING

Department of Regional Development, Manufacturing and Water  
Water Resource Manager and Water Regulator (WRRR Co-Patron)

Department of Environment and Science

WATER  
DELIVERY

**sunwater**

(WRRR Co-Patron)



**Regulation  
by  
Government**

**Water Regulation and Delivery in 2022**

Government Owned  
Water Corporations

**Delivery  
by  
Water Corporations**

Locally Managed  
Water Corporations





## Water

› How Queensland's water system works

› Our role as a water regulator: compliance approach and principles

› Public notices

› Maps and data

› Consultations and initiatives

› Using water wisely

› Water licensing, planning and regulation

Home › Water › Our role as a water regulator: compliance approach and principles

# Our role as a water regulator: compliance approach and principles

Queensland's water resources are vital for our economic, social, environmental, and cultural wellbeing and drive economic growth and job opportunities for our regional communities.

Our role is to ensure that water is managed fairly and responsibly and to make best use of our water resources by delivering sustainable, safe, secure and affordable water to all Queenslanders for today and tomorrow.

To achieve this, our department administers a range of laws that govern how water resources are accessed and used. This includes:

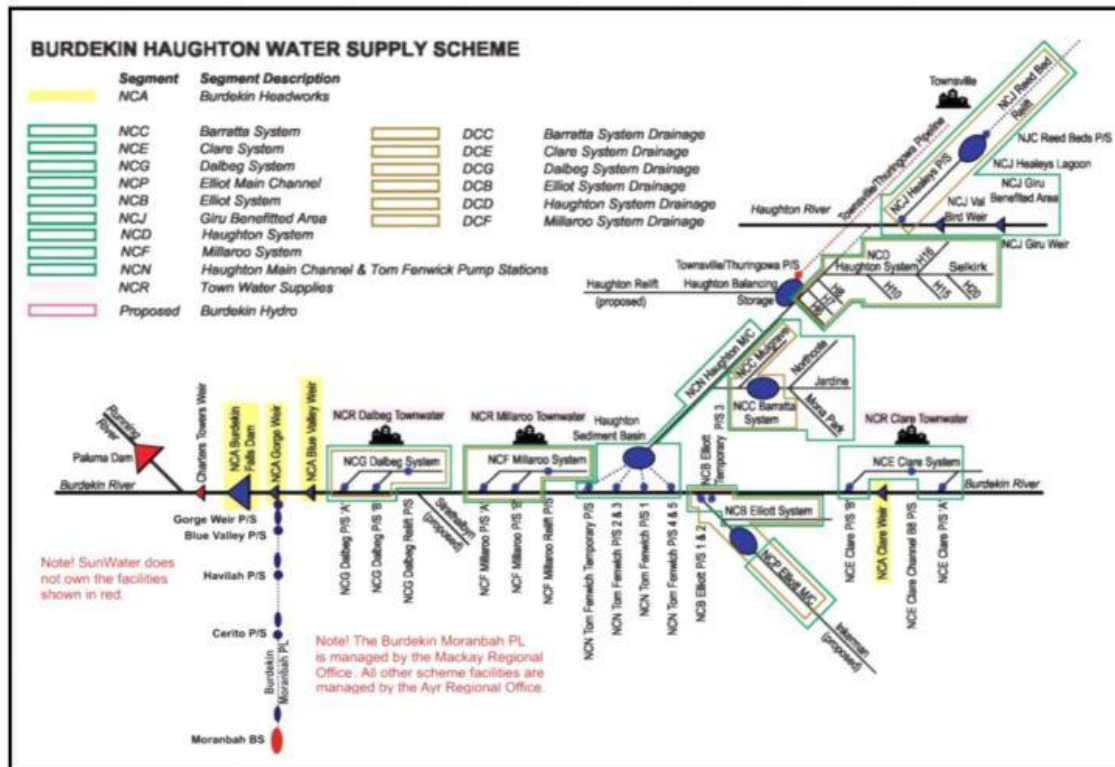
- [Water Act 2000](#)
- [Water Regulation 2016](#)
- [River Improvement Trust Act 1940](#)
- [Water Supply \(Safety and Reliability\) Act 2008](#)

## WATER REGULATION & WATER RESOURCE MANAGEMENT

(Dept of Regional Development, Manufacturing & Water)

**WRRR Co-Patron**

Figure 3 Burdekin Houghton Water Supply Scheme Schematic Diagram<sup>3</sup>



**WATER DELIVERY**  
 Example: BHWSS Network  
 (schematic courtesy of Sunwater)  
**WRRRA Co-Patron**



Burdekin Falls Dam

- [Barker Barambah](#)
- [Bowen Broken Rivers](#)
- [Boyne River and Tarong](#)
- [Bundaberg](#)
- [Burdekin Houghton](#)
- [Callide Valley](#)
- [Chinchilla Weir](#)
- [Cunnamulla](#)
- [Dawson Valley and Theodore](#)
- [Eton](#)
- [Lower Fitzroy](#)

## Sunwater Schemes

(source: QCA)

- [Lower Mary River](#)
- [Macintyre Brook](#)
- [Maranoa River](#)
- [Mareeba-Dimbulah](#)
- [Nogoa Mackenzie and Emerald](#)
- [Pioneer River](#)
- [Proserpine River](#)
- [St George](#)
- [Three Moon Creek](#)
- [Upper Burnett](#)
- [Upper Condamine](#)

Govt-owned Water Corporation



Maroon Dam

- [Cedar Pocket Dam](#)
- [Central Brisbane River](#)
- [Central Lockyer Valley](#)
- [Logan River](#)
- [Lower Lockyer Valley](#)
- [Mary Valley and Pie Creek](#)
- [Warrill Valley](#)

## **WATER DELIVERY**

SEQ Water Schemes

(source: QCA)

Govt-owned Water Corporation





Locally owned and managed  
**Channel Irrigation Scheme**

Source of Supply: Sunwater Headworks  
(Theodore WSS)



Locally owned and managed  
**Channel Irrigation Scheme**

Source of Supply: Sunwater Headworks  
(St George WSS)

## WATER DELIVERY – Schemes managed by Locals



Locally owned and managed  
**Channel Irrigation Scheme**

Source of Supply: Sunwater Headworks  
(Nogoa McKenzie & Emerald WSS)



Locally owned and managed  
**Channel Irrigation Scheme**

Source of Supply: Sunwater Headworks  
(Pioneer River WSS)



Locally-owned Water Corporations

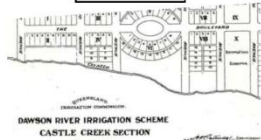
# OUR IWS COMMUNITY – Its Long Journey

## COLONY BUILDING



Early 'Water' Initiatives  
Tapping the GAB, Muttaborra

## PIONEERING



Early Days of the IWSC  
First Scheme and Town that 'Water' Built – 1920's

## EDUCATING



Early 'Water' Messages  
Australia Day, Queen St Brisbane 1953

## DEVELOPING



Early Days in the construction of Tinaroo Falls Dam (IWSC - 1950's); Moogerah Dam (IWSC - 1960's); and Burdekin Falls Dam (QWRC - 1980's)

## HONOURING

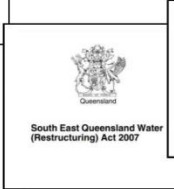
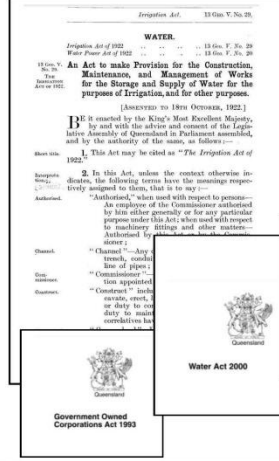
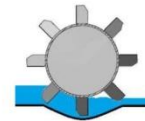


State Recognition of Personal Contributions to 'Water' - Fred Haigh Dam



State Recognition of Personal Contributions to 'Water' - Tom Fenwick Pump Stations

## REFORMING



Some of the defining state 'Water' legislation which has helped to shape both early and recent growth of Our IWS Community

EVOLVING

RESOURCE MGT  
and REGULATION



RESEARCH and  
MODELLING

Department of Regional Development, Manufacturing and Water  
Water Resource Manager and Water Regulator (WRRRA Co-Patron)

Department of Environment and Science

WATER  
DELIVERY

**sunwater**

(WRRRA Co-Patron)

**seqwater**  
WATER FOR LIFE

**THEODORE**  
WATER

**Mallawa**  
IRRIGATION

**Fairbairn**  
IRRIGATION

**ETON**  
IRRIGATION

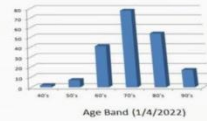
Government Owned  
Water Corporations

Locally Managed  
Water Corporations

## RETIRING



Membership  
(1/4/2022)



WRRA – Water Resources Retirees Association  
(The Social Side of Our IWS Community)

## WORTH CELEBRATING



Mareeba (22 Sept)

Yeppoon (6 Oct)

Theodore (4 Oct)

Bundaberg (10 Oct)

Toowoomba (12 Oct)

Brisbane (19 Oct)

Locations of WRRA-sponsored events around the state in 2022, events which celebrated the 100<sup>th</sup> anniversary of the passage of the Irrigation Act of 1922 – and the Birth of Our IWS Community



PROUD OF OUR ASSOCIATION

Placemat 6 of 6

# IRRIGATION ACT of 1922



PROUD OF OUR ASSOCIATION