

OUR IWS COMMUNITY – *The Team behind 'The Town That Water Built'*

An Act to make Provision for the Construction, Maintenance, and Management of Works for the Storage and Supply of Water for the purposes of Irrigation, and for other purposes.

[ASSENTED TO 18TH OCTOBER, 1922.]

BE it enacted by the King's Most Excellent Majesty, by and with the advice and consent of the Legislative Assembly of Queensland in Parliament assembled, and by the authority of the same, as follows:—

1. This Act may be cited as "*The Irrigation Act of 1922.*"

2. In this Act, unless otherwise indicated, the following terms respectively assigned to them, shall mean—

"Authorised," when used in relation to any person—  
An employee of the Commission authorised by him either generally or for any particular purpose under the provisions of this Act to use any machinery or to do any work authorised by the Commission;

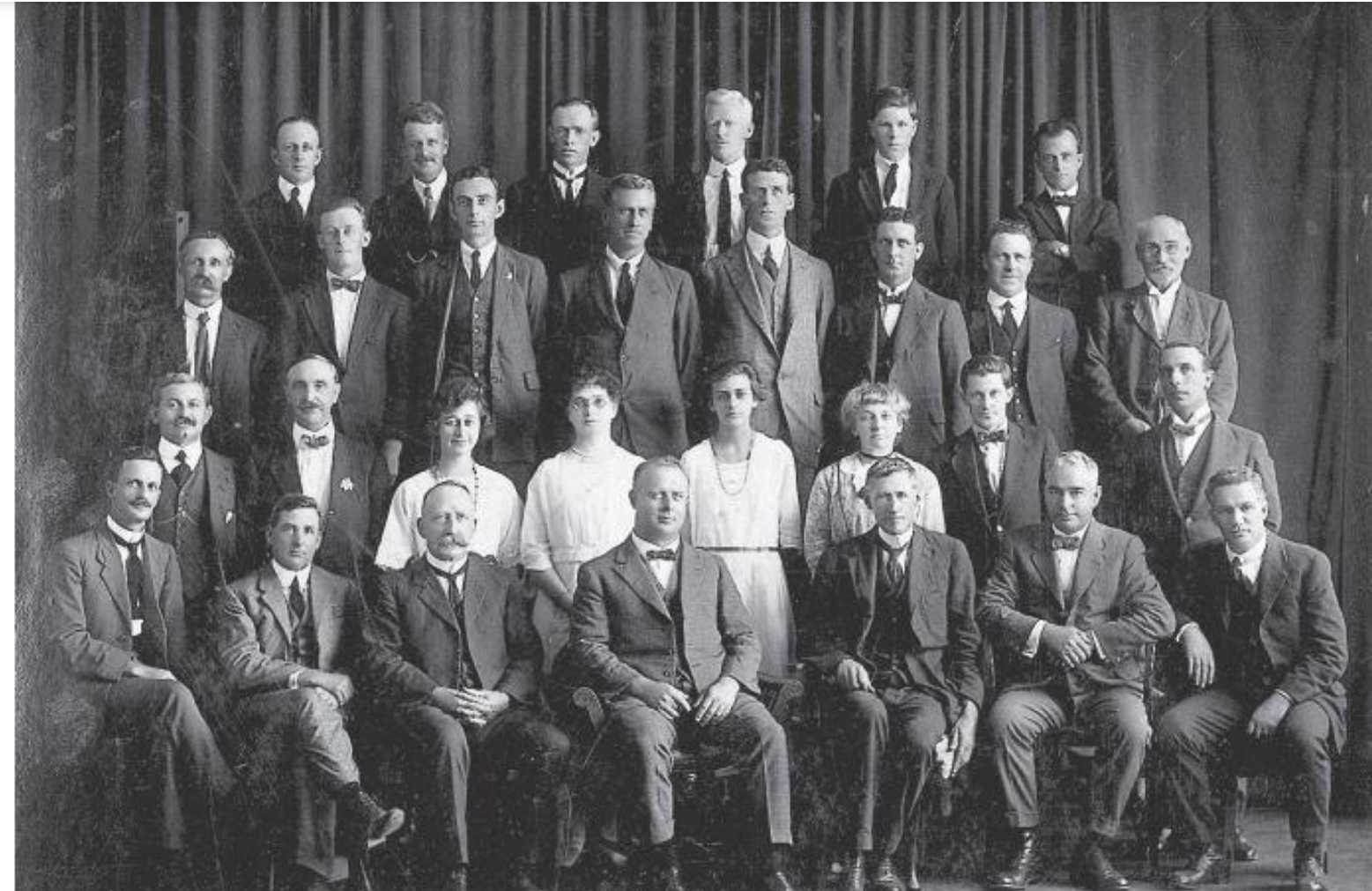


otherwise indicated, the following terms respectively assigned to them, shall mean—  
"Authorised," when used in relation to any person—  
An employee of the Commission authorised by him either generally or for any particular purpose under the provisions of this Act to use any machinery or to do any work authorised by the Commission;

**ARCHIBALD PARTRIDGE**

(Qlds First Irrigation Commissioner)

"Commissioner"—The Commissioner of Irrigation appointed under this Act;



**QUEENSLAND IRRIGATION COMMISSION HEADQUARTERS STAFF**

**DECEMBER 1922**

(Back row) ET Abell (Records Clerk), AE Oram (Senior Clerk), WA Conroy (Computer), RL Wragge (Stream Gauger), MH Shenton (Accounts Branch) EV Stevens (Accountant)

(Third row) WC Ross (Storekeeper), J Ogden (Streamgaugers Asst), AF Sharp (Hydraulic Surveyor), ER Taylor (Draftsman), AF McHenry (Commissioner's Sec) WC Fairley (Asst Mech Eng), PJ Kenny (Transport), G Irons (Inspector)

(Second row) A Lamb (Insp. Works), WW Bond (Chief Draftsman), NM Austin (Typiste), J Burnett (Asst Records Clerk), AEI Penballurick (Typiste), EA Earle (Mail Clerk), WF Kearton (Draftsman), WH Patterson (Draftsman)

(Front row) FJ Calvert (Eng. Stream Gauging), PC Tibbits (Eng. Art. Bores), CE Desbon (Eng. Water Supply), AF Partridge (Commissioner), BE Shaw (Supv. Irrig. Eng), GT Chapman (Chief Clerk), C Douglas (Mech. Eng.)

1922 – THEODORE – 2022



PROUD WE PLAYED OUR PART

